



Cropped Top and Trousers

PROJECT DESIGN © LOVE PRODUCTIONS 2022
THIS DESIGN IS PROTECTED BY COPYRIGHT
AND MUST NOT BE MADE FOR RESALE.

1.5-CM (5/8-IN.) SEAM ALLOWANCE INCLUDED (UNLESS OTHERWISE STATED)

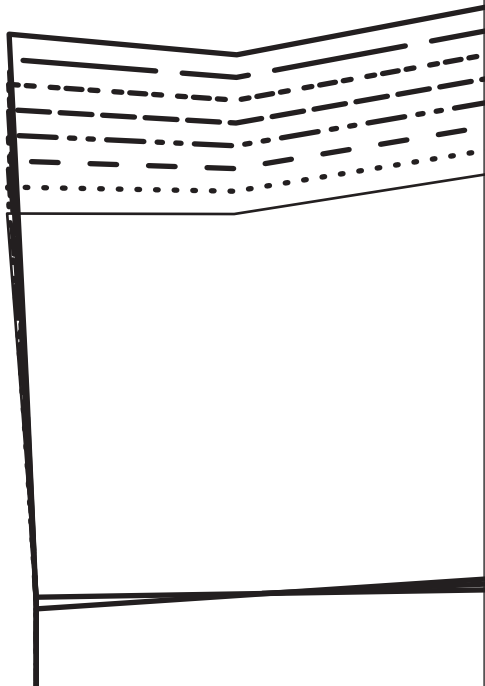
TEST SQUARE: 10CM x 10CM / 4 INCHES x 4 INCHES

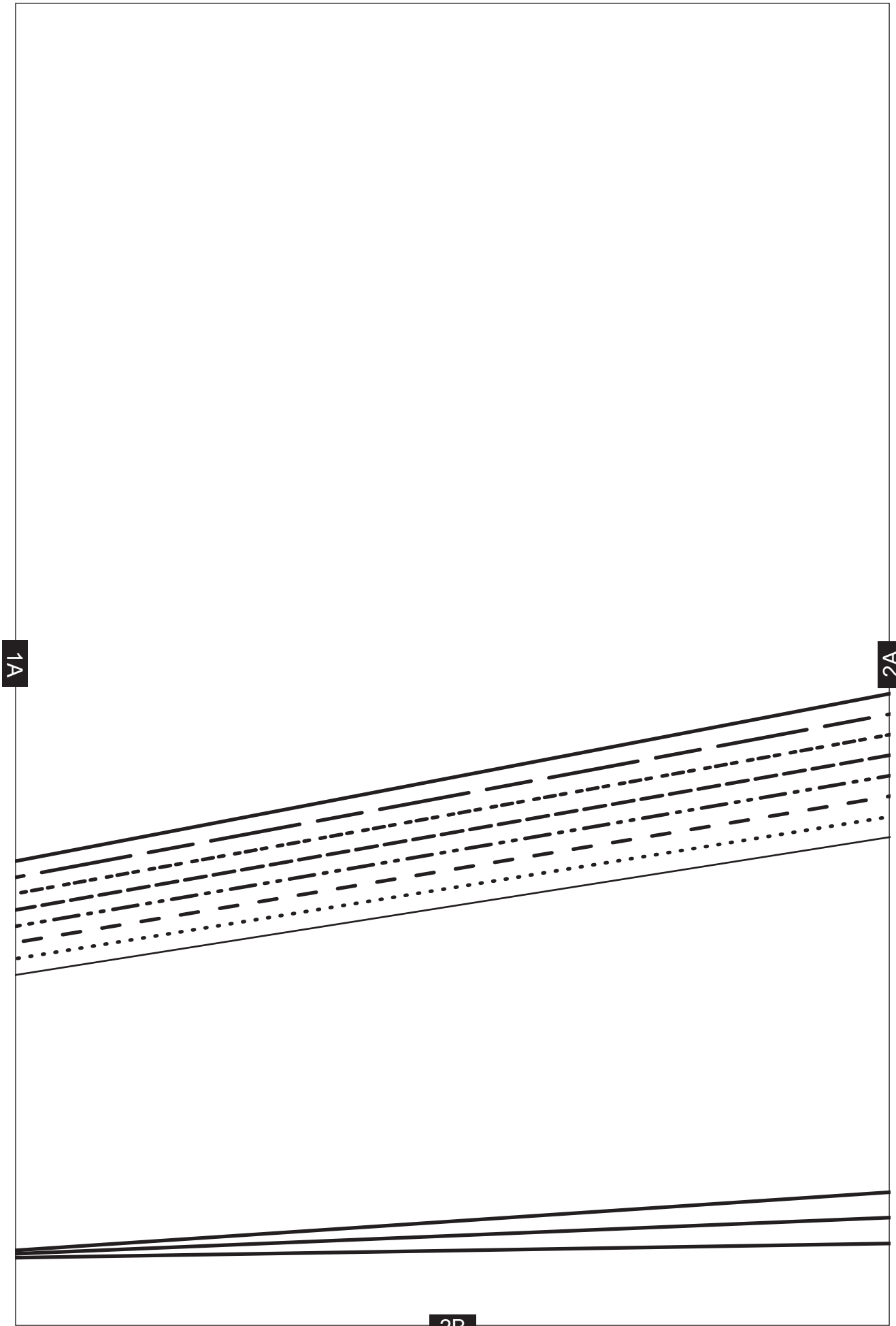
SIZING KEY

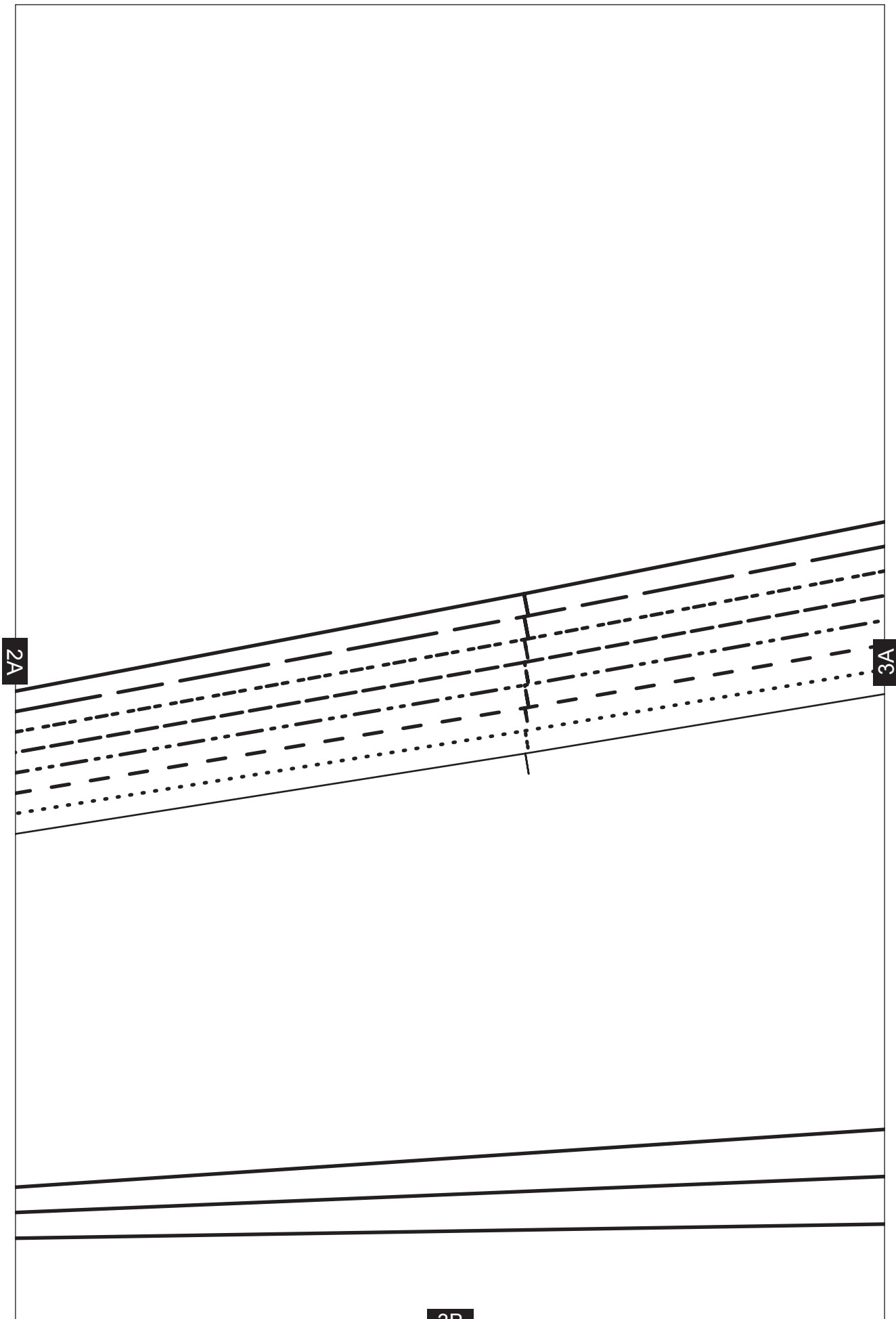
—————	8
.....	10
- - - - -	12
- . - . - .	14
- - - - -	16
- . - . - .	18
— — — — —	20
—————	22

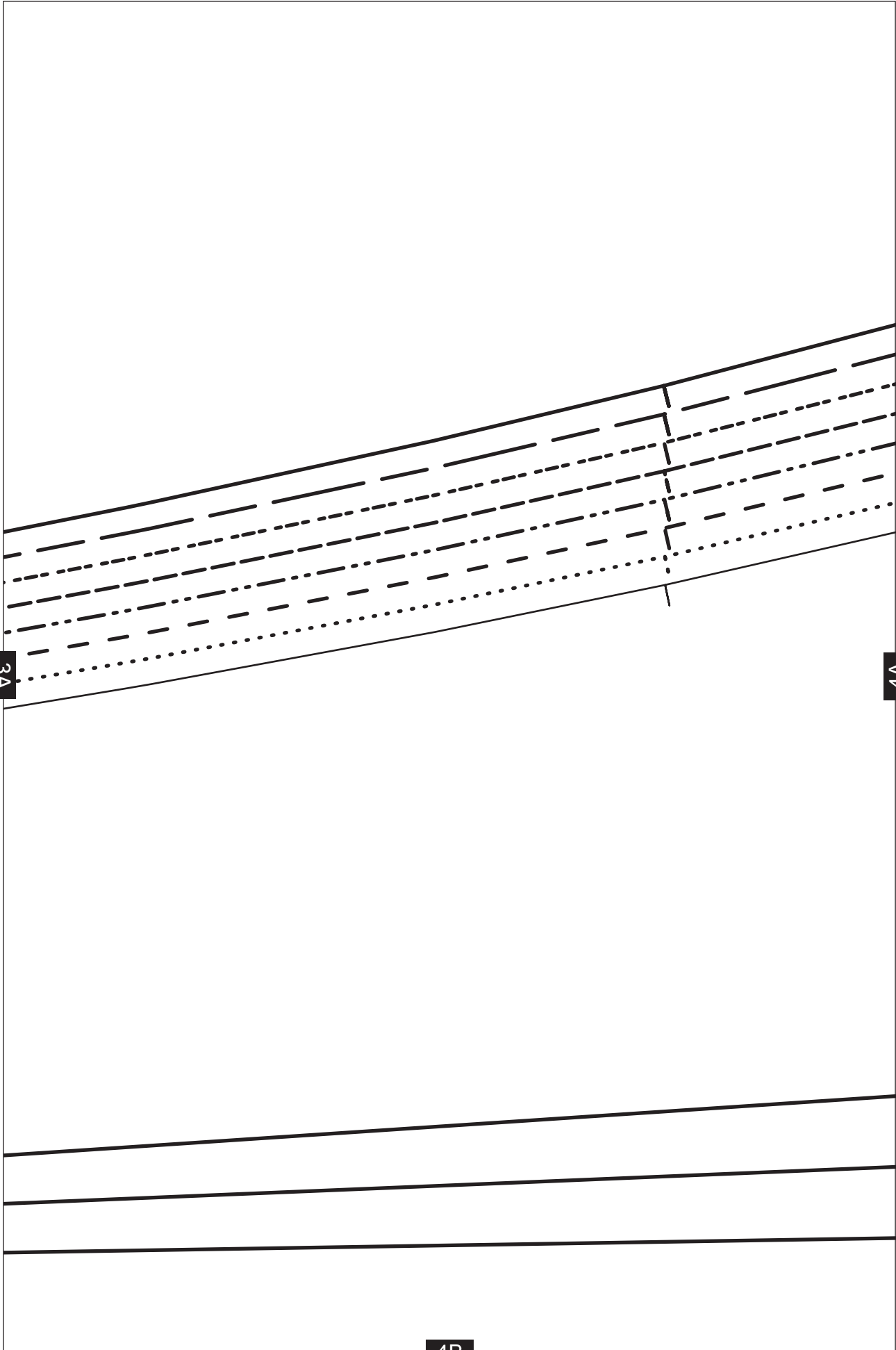
1A

1B





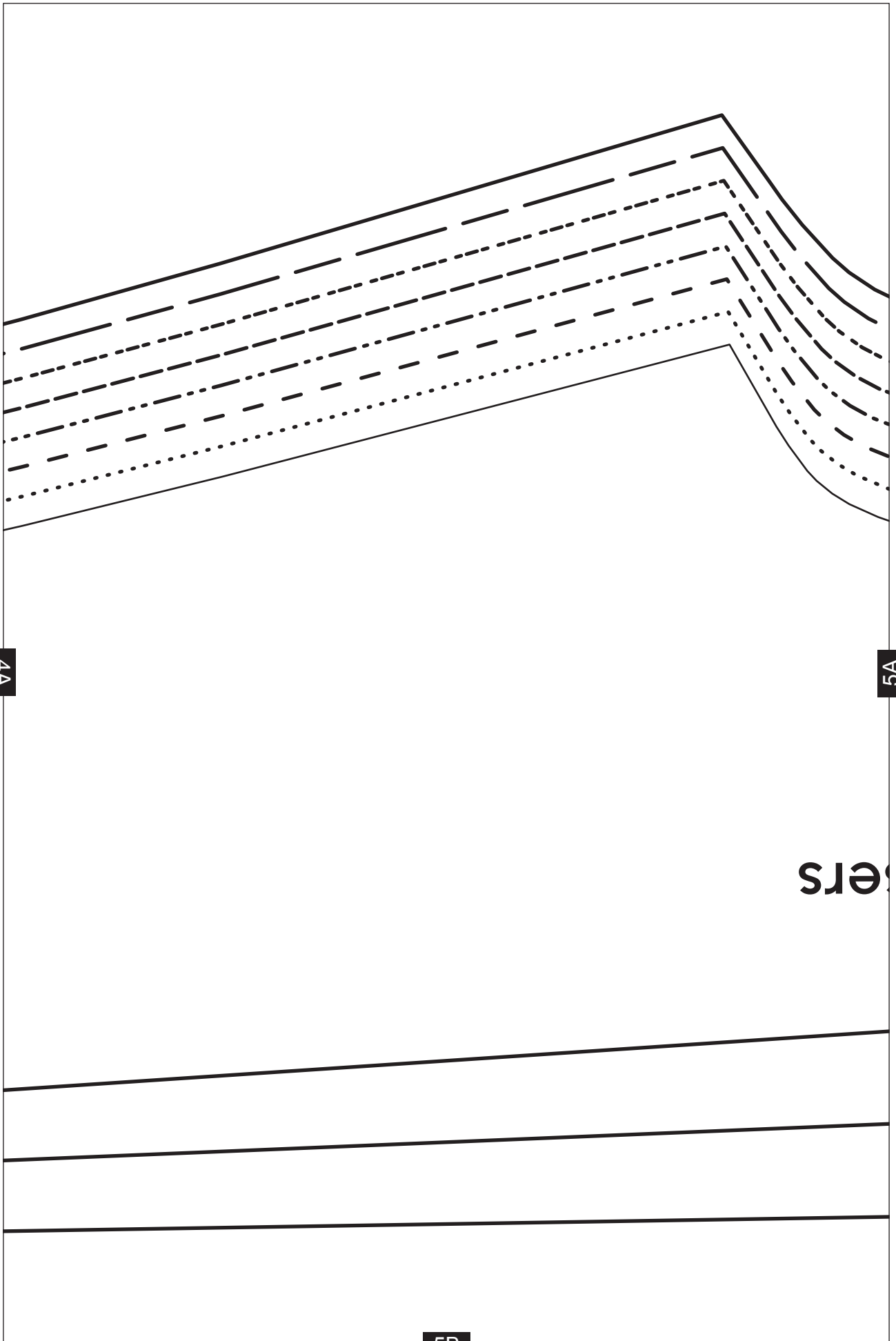




3A

4A

4B

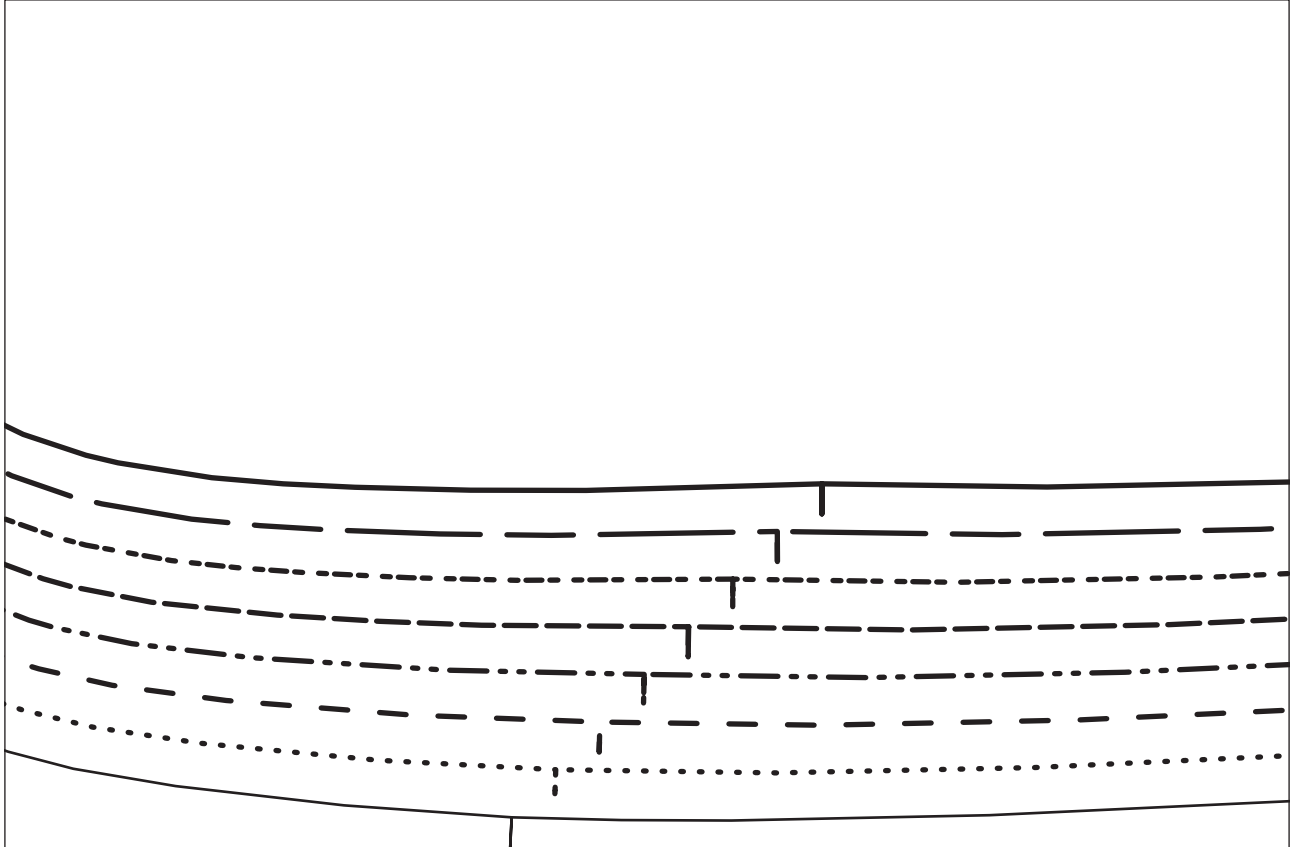


4A

5A

ers

5B

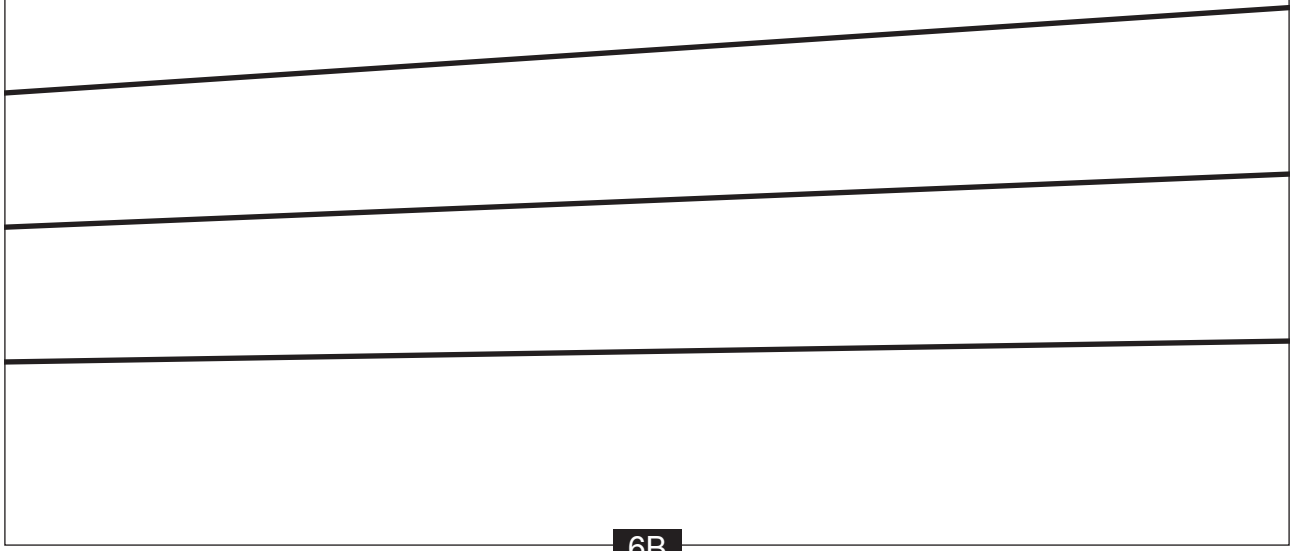


5A

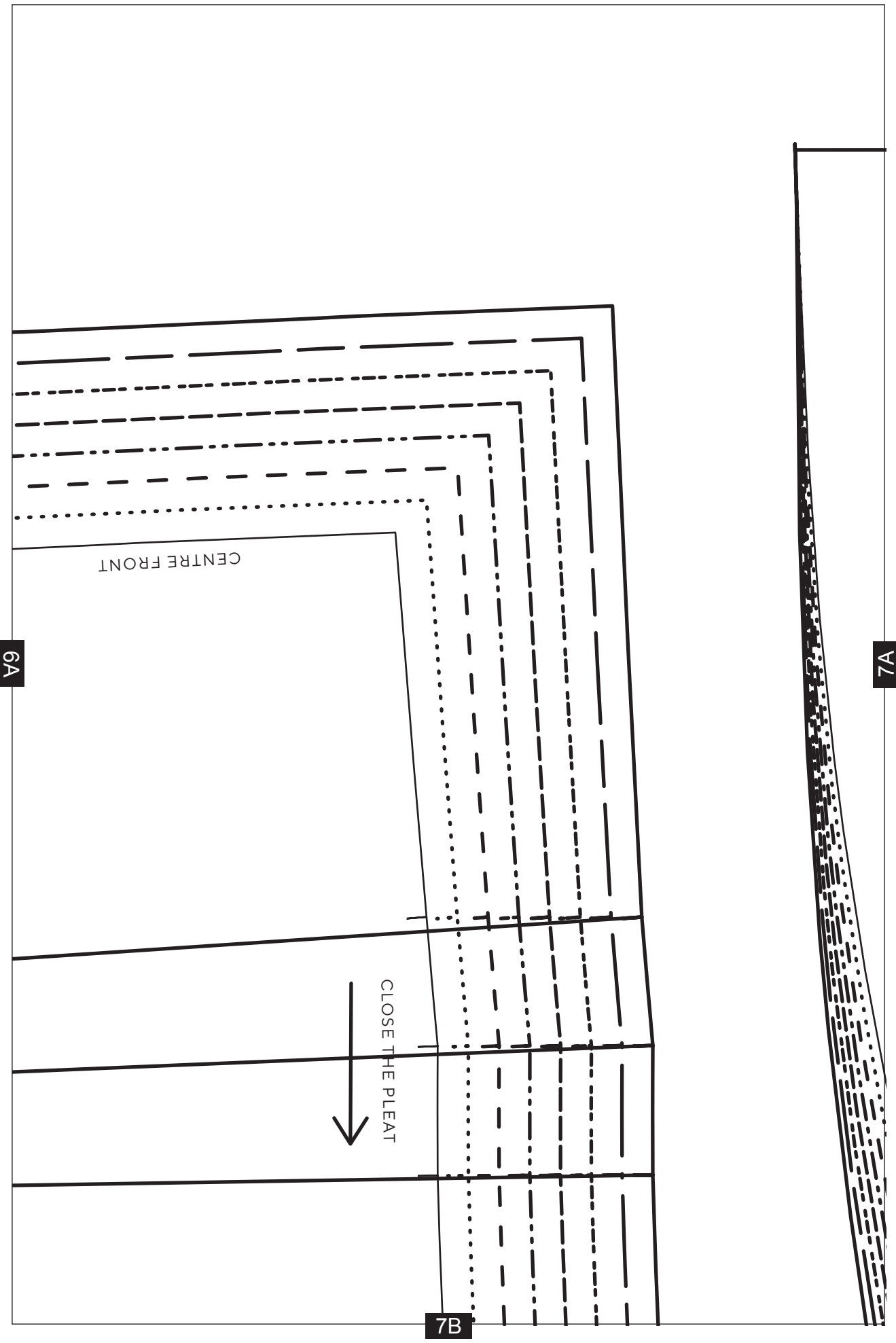
6A

Cropped Top and Trousers

FRONT TROUSER - CUT 1 PAIR



6B



6A

CENTRE FRONT

CLOSE THE PLEAT

7B

7A

8A



8B

Cropped Top and Trousers

FRONT BODICE - CUT 1 ON THE FOLD

7A



PLACE ON FOLD



8A

9A

GRAINLINE



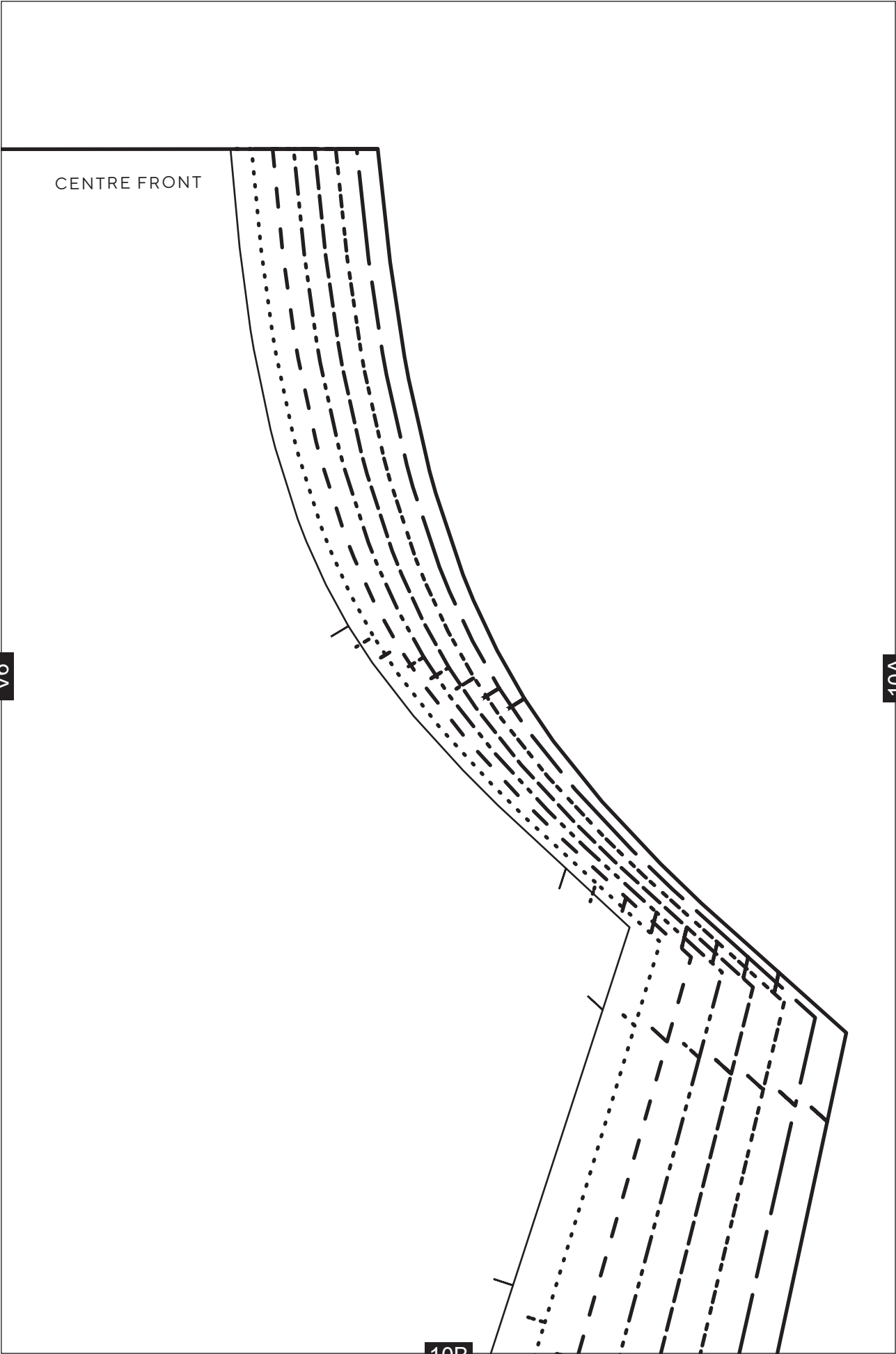
9B

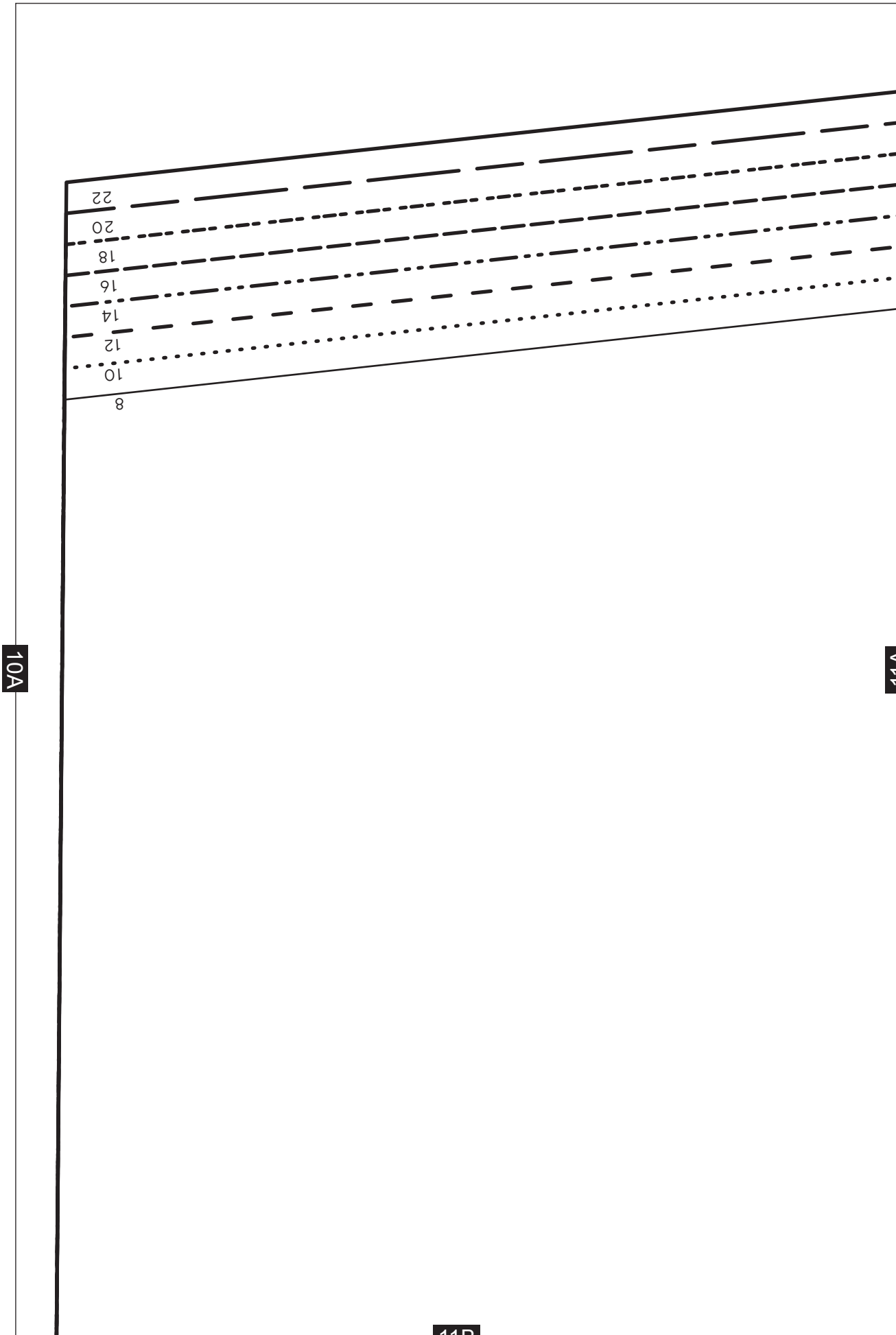
CENTRE FRONT

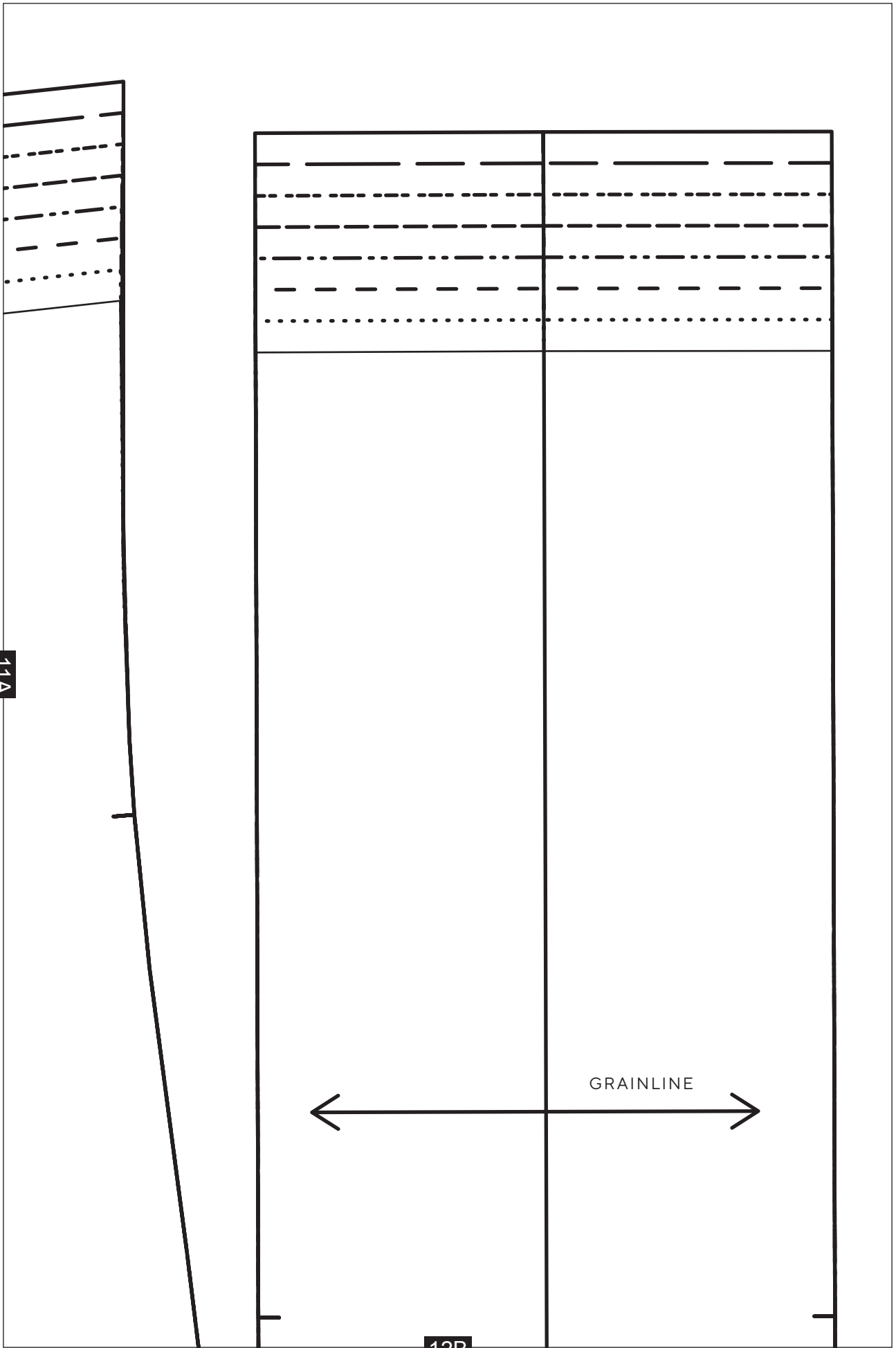
9A

10A

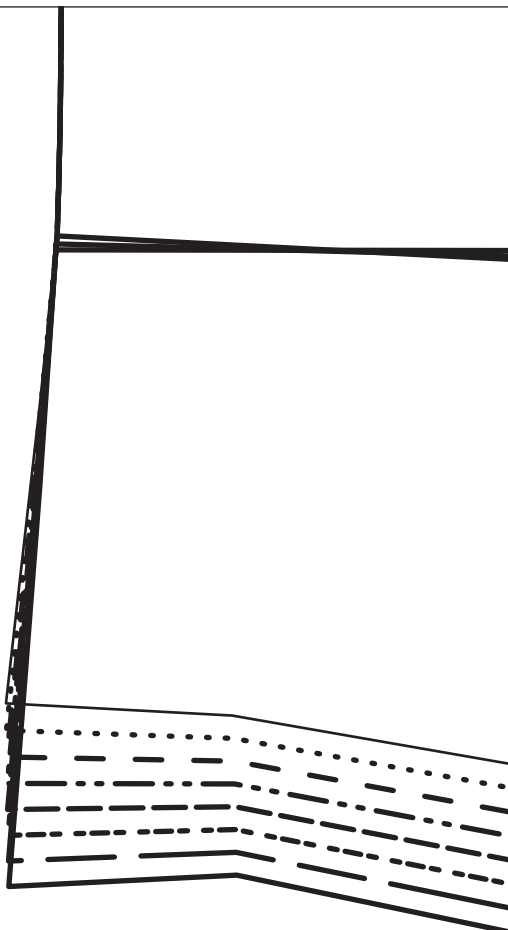
10B



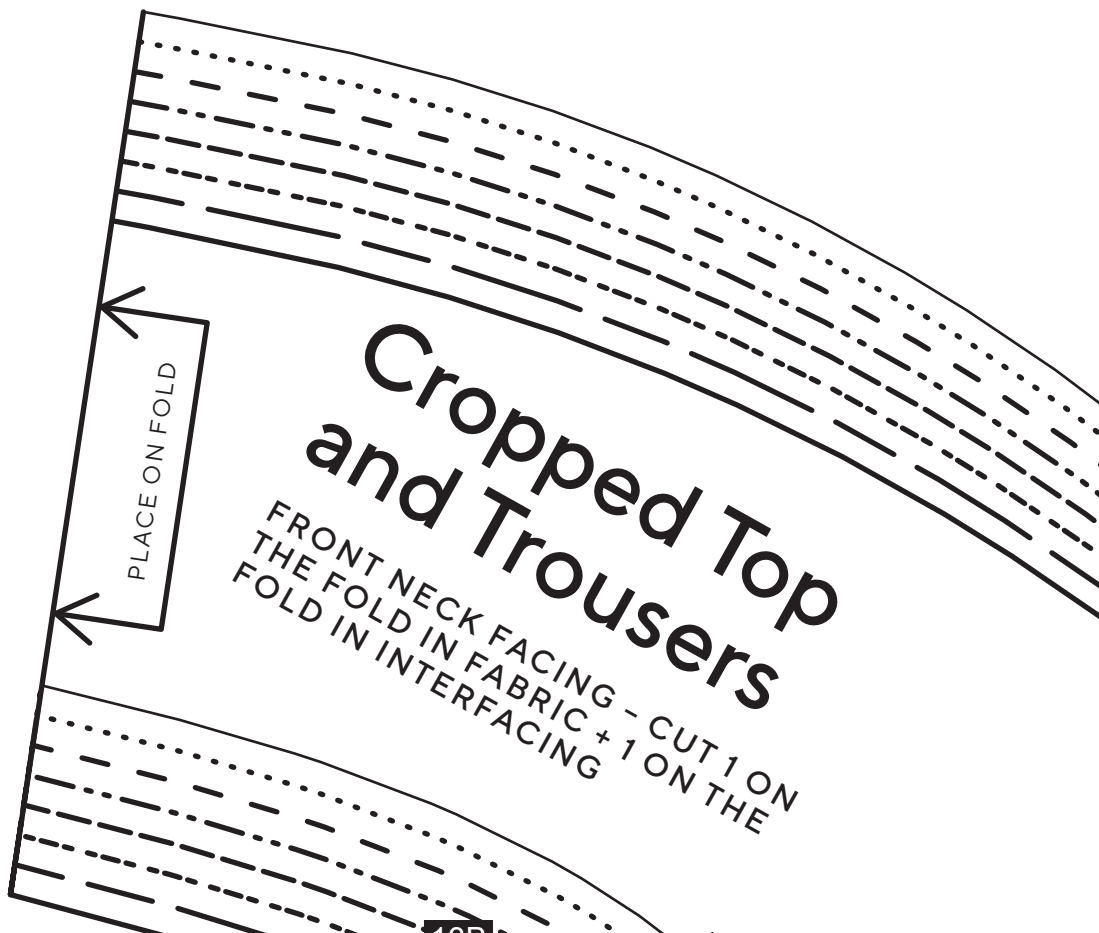




1B

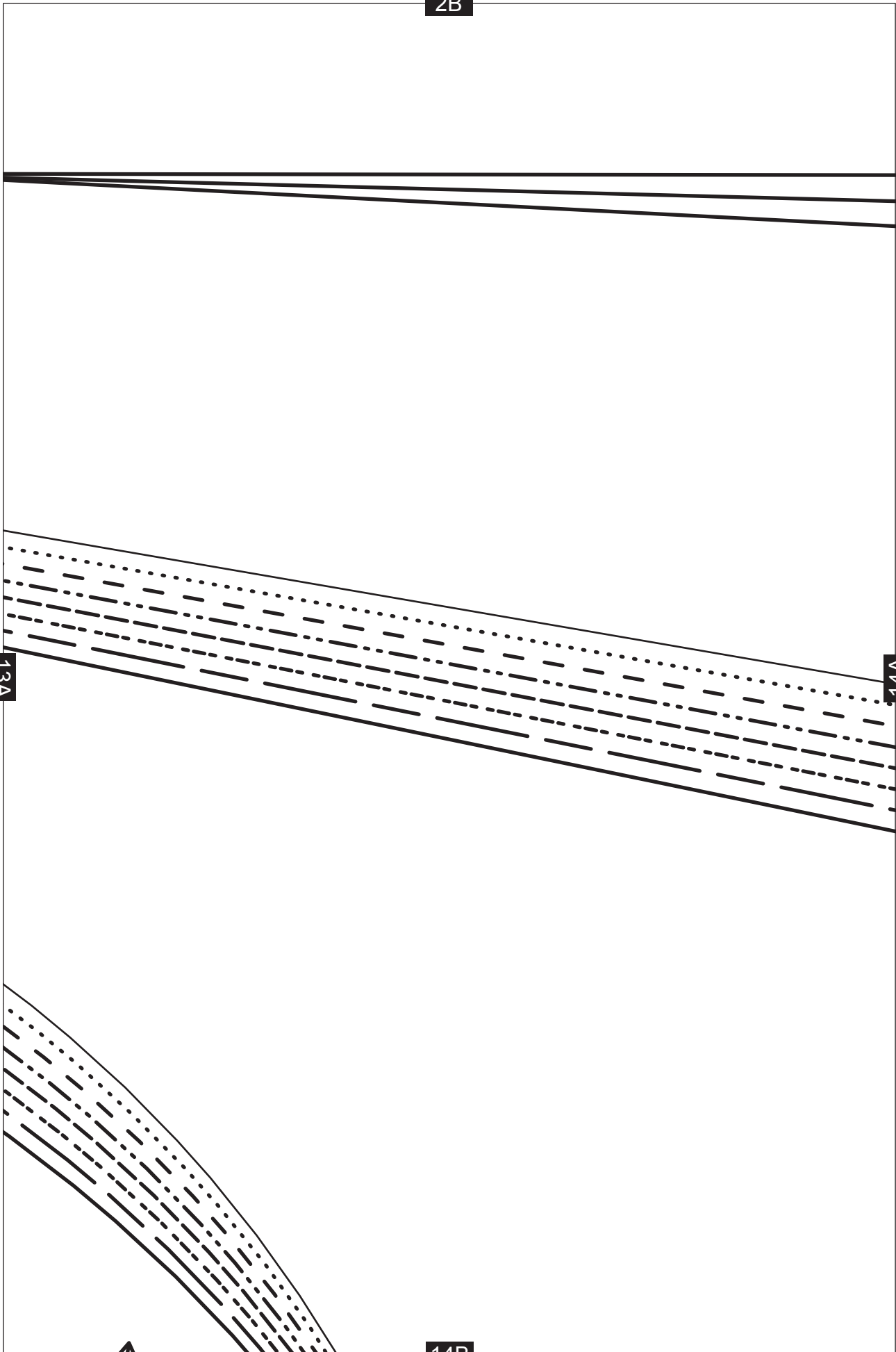


13A

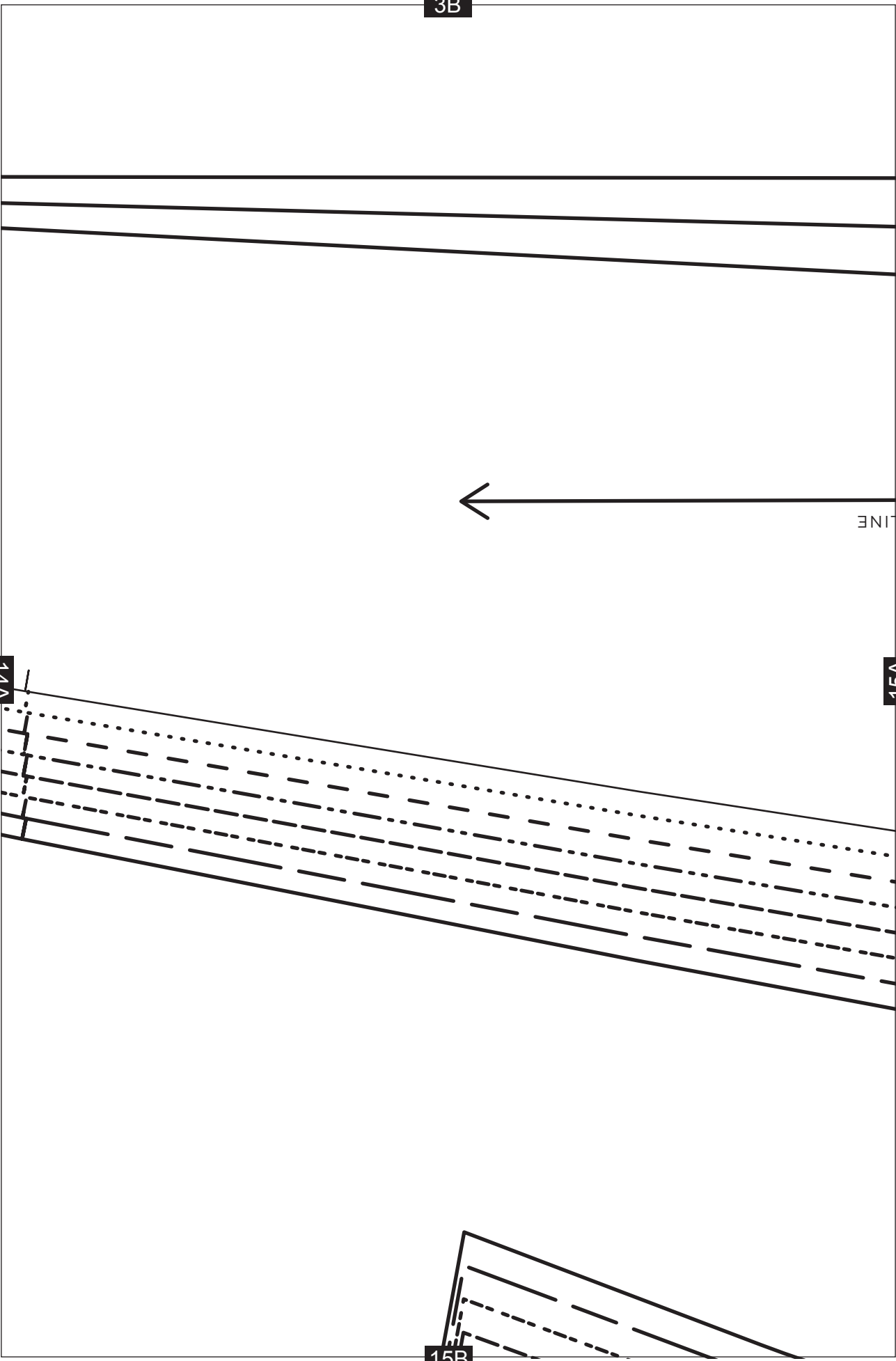


13B

2B



3B



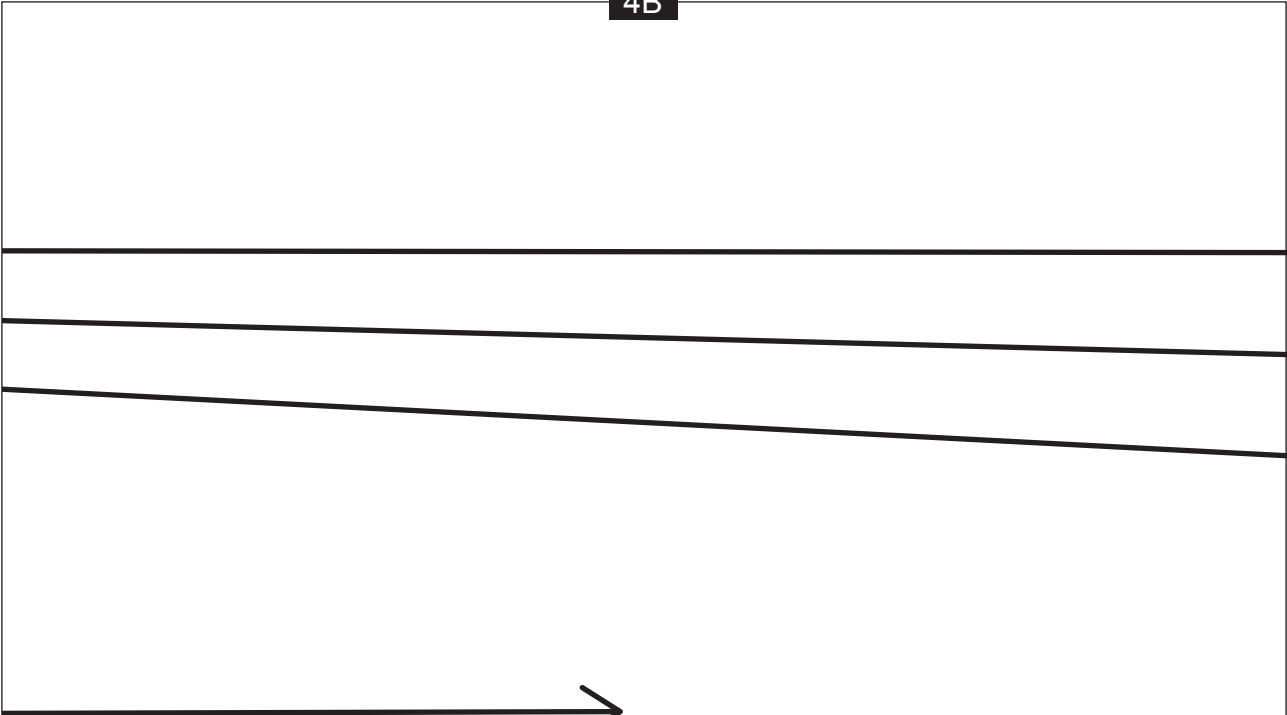
LINE

14A

15A

15B

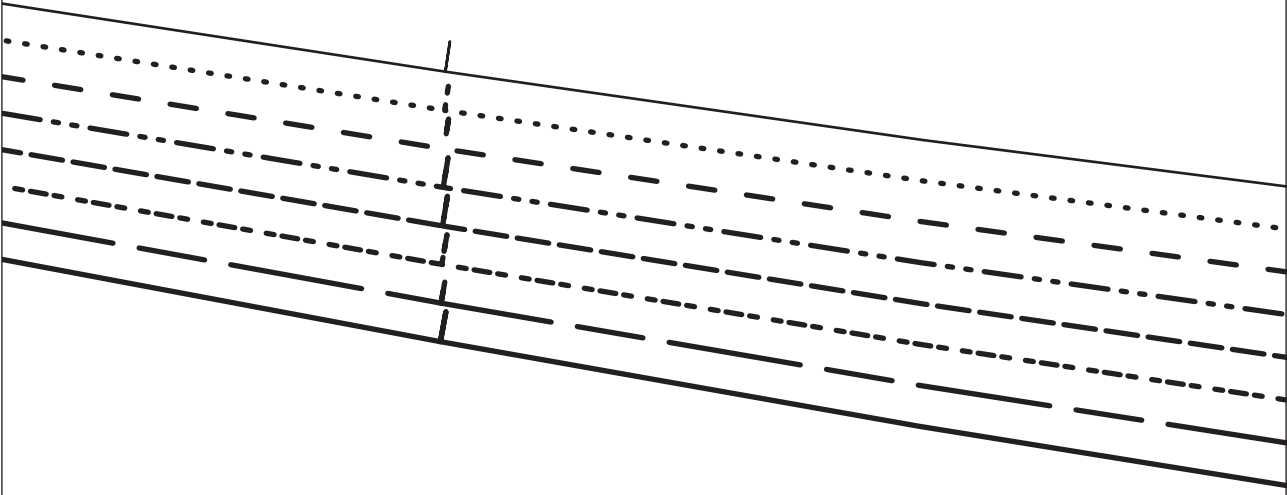
4B



GRAIN

15A

16A

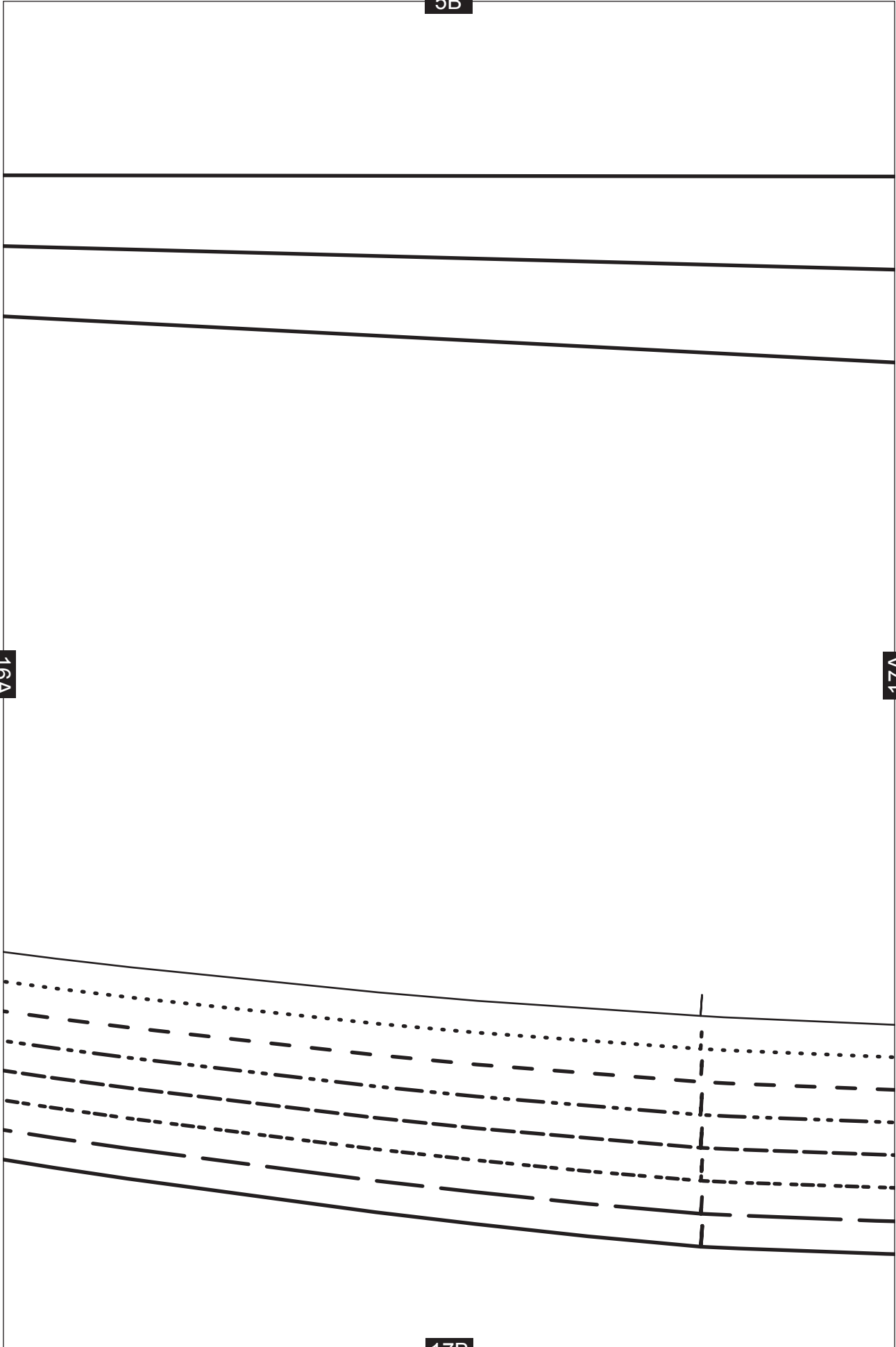


16B

5B

16A

17A



17B

6B

17A

18A

ZIP LEFT SIDE ONLY

8

10

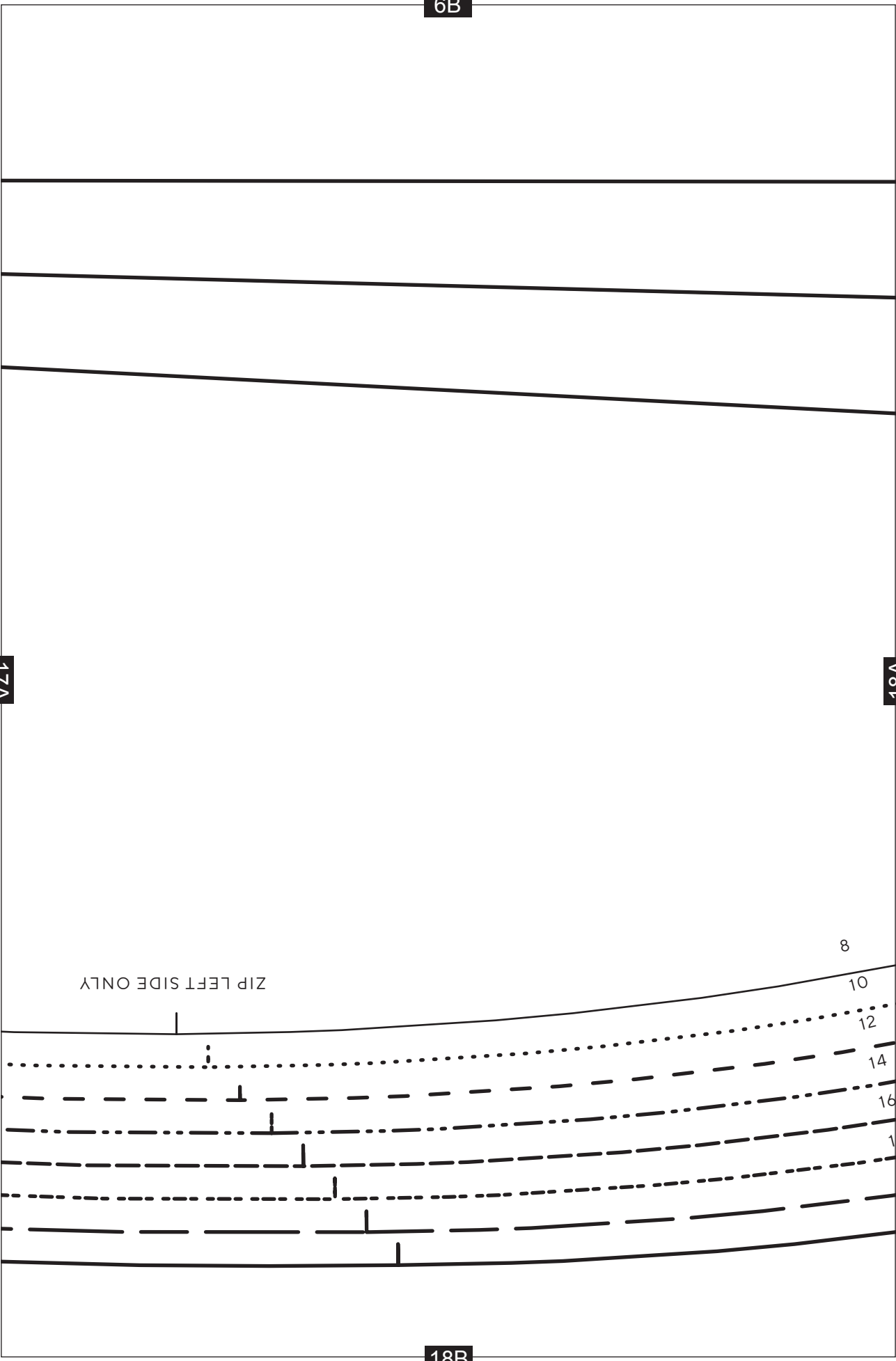
12

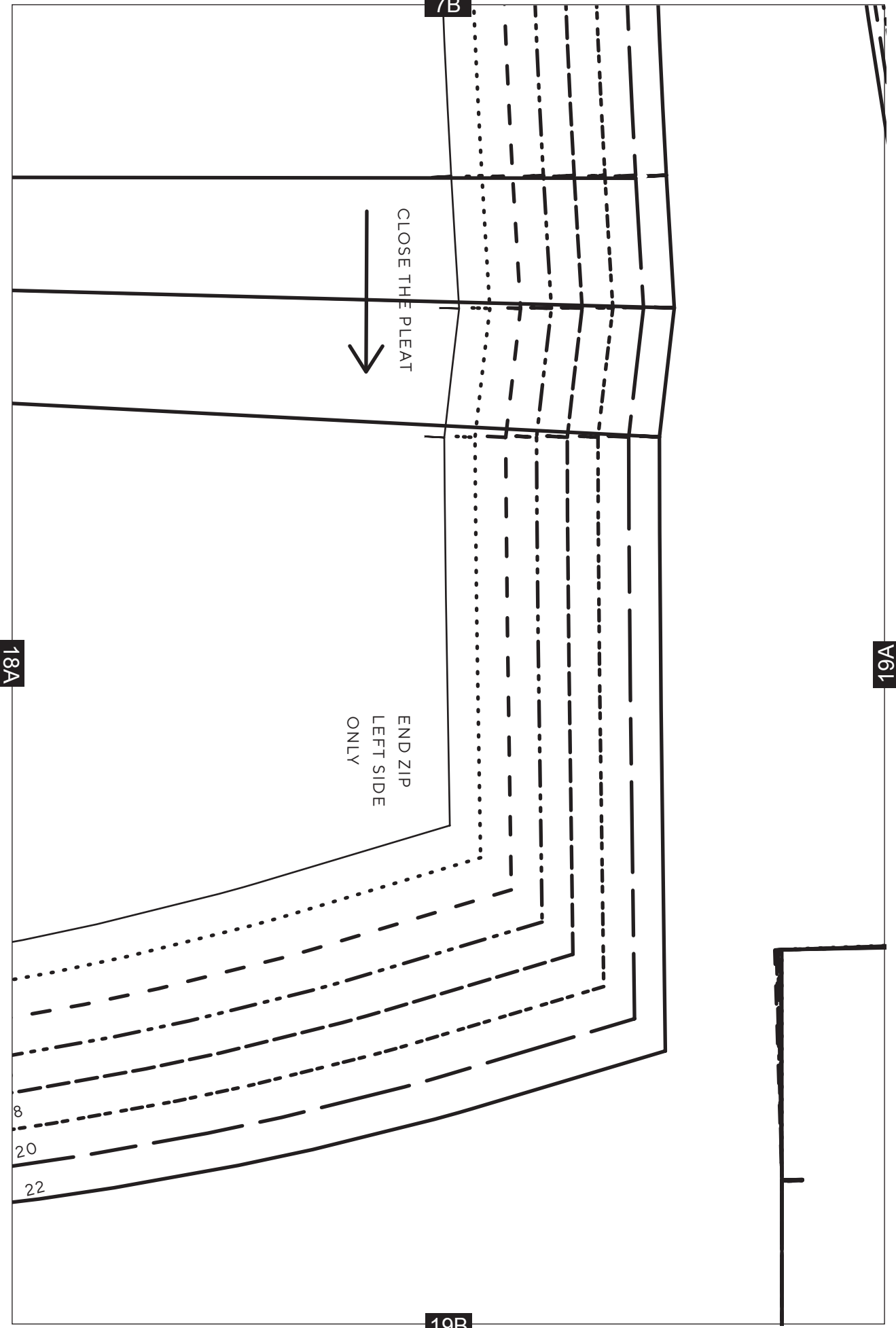
14

16

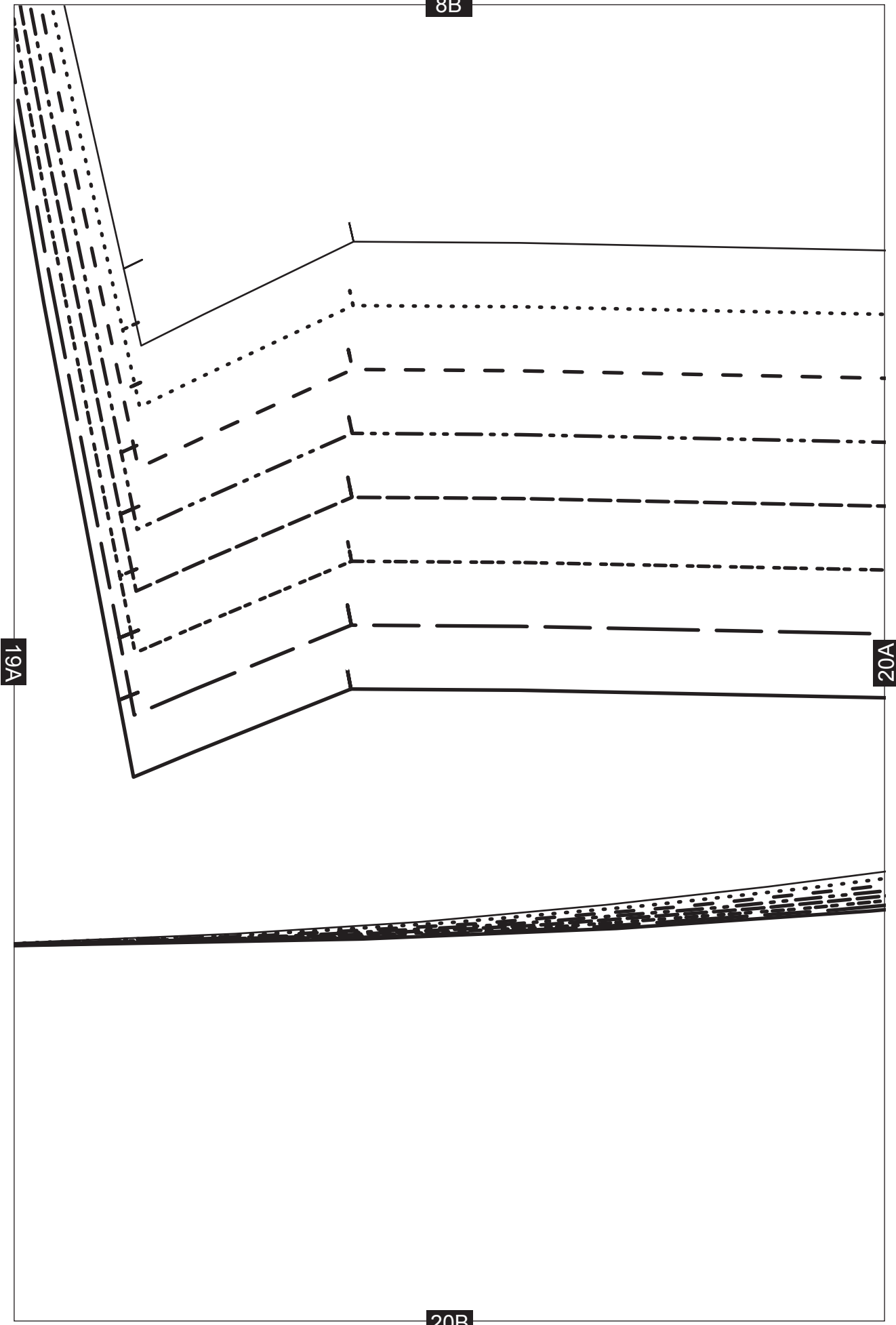
1

18B





8B

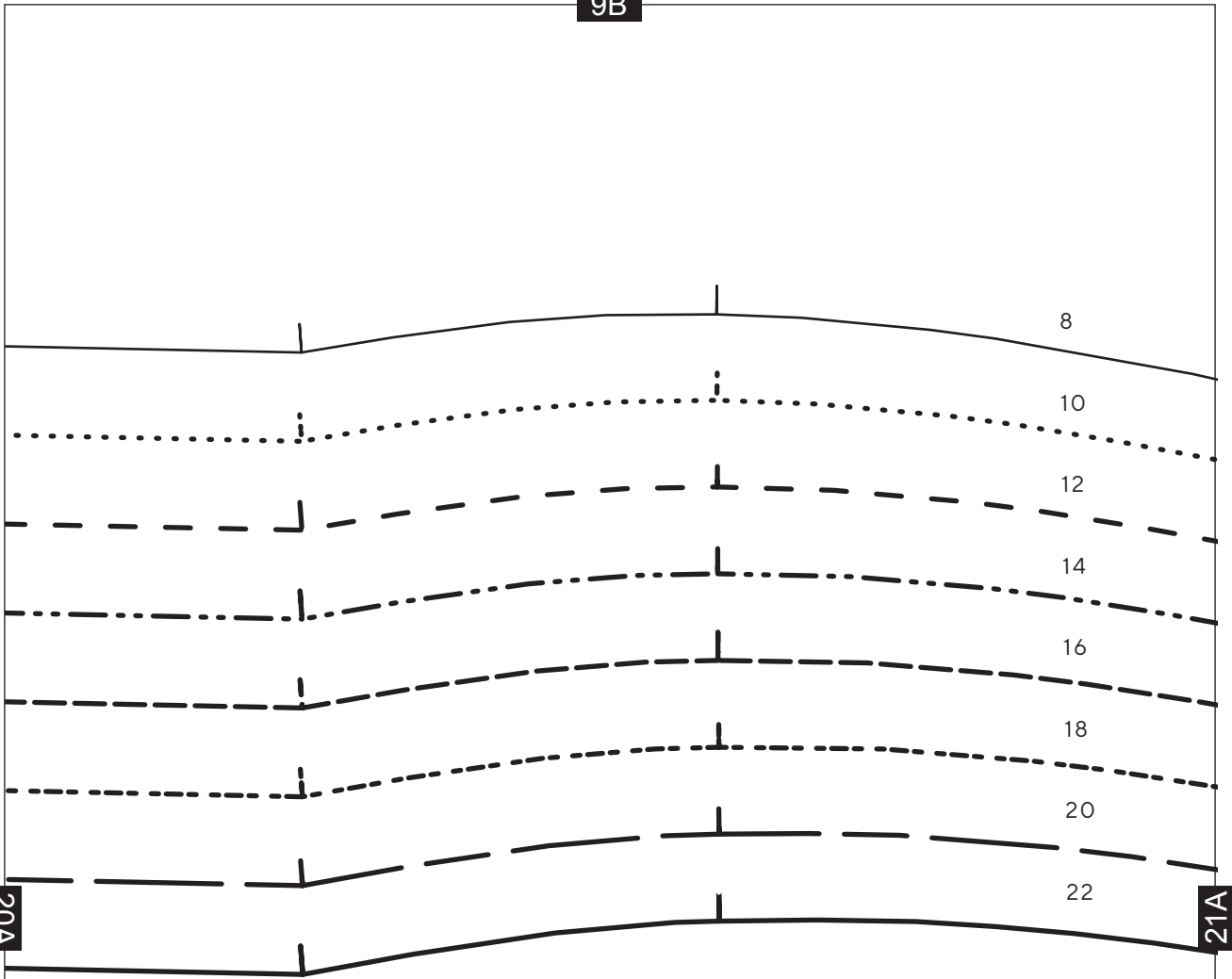


19A

20A

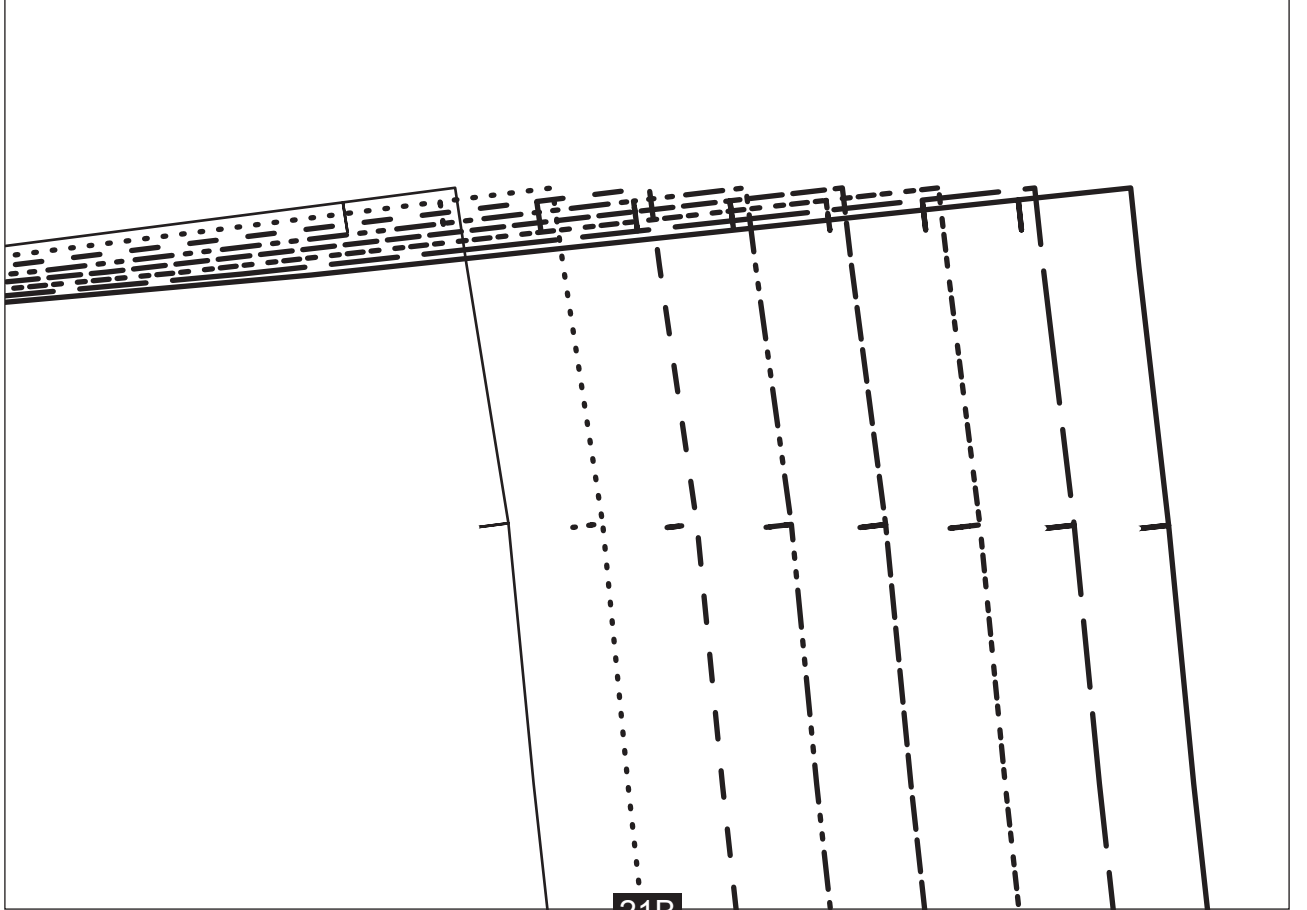
20B

9B



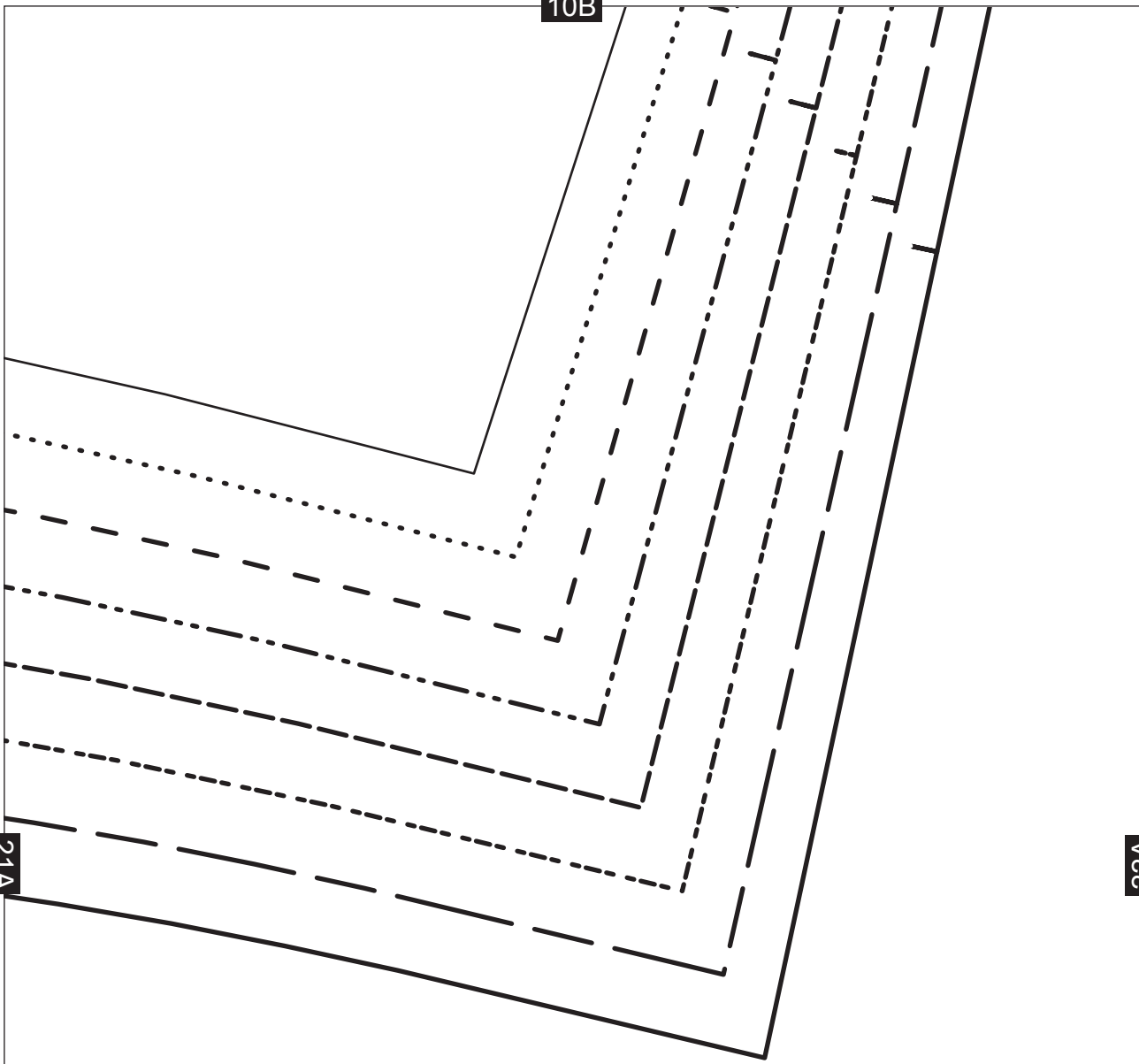
20A

21A



21B

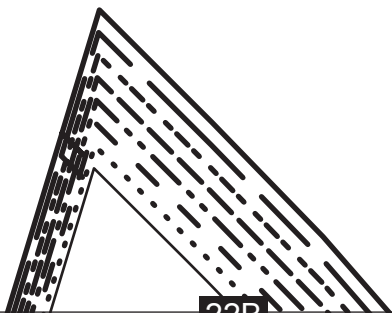
10B



21A

22A

22B



11B

Cropped Top and Trousers

SLEEVE - CUT 1 PAIR



22A

23A

23B

Cropped Top and Trousers

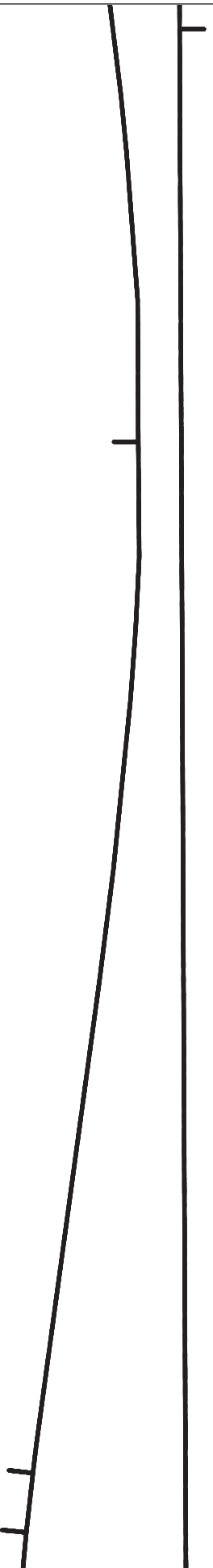
SLEEVE CUFF - CUT 1 PAIR

12B

24B

ers

23A

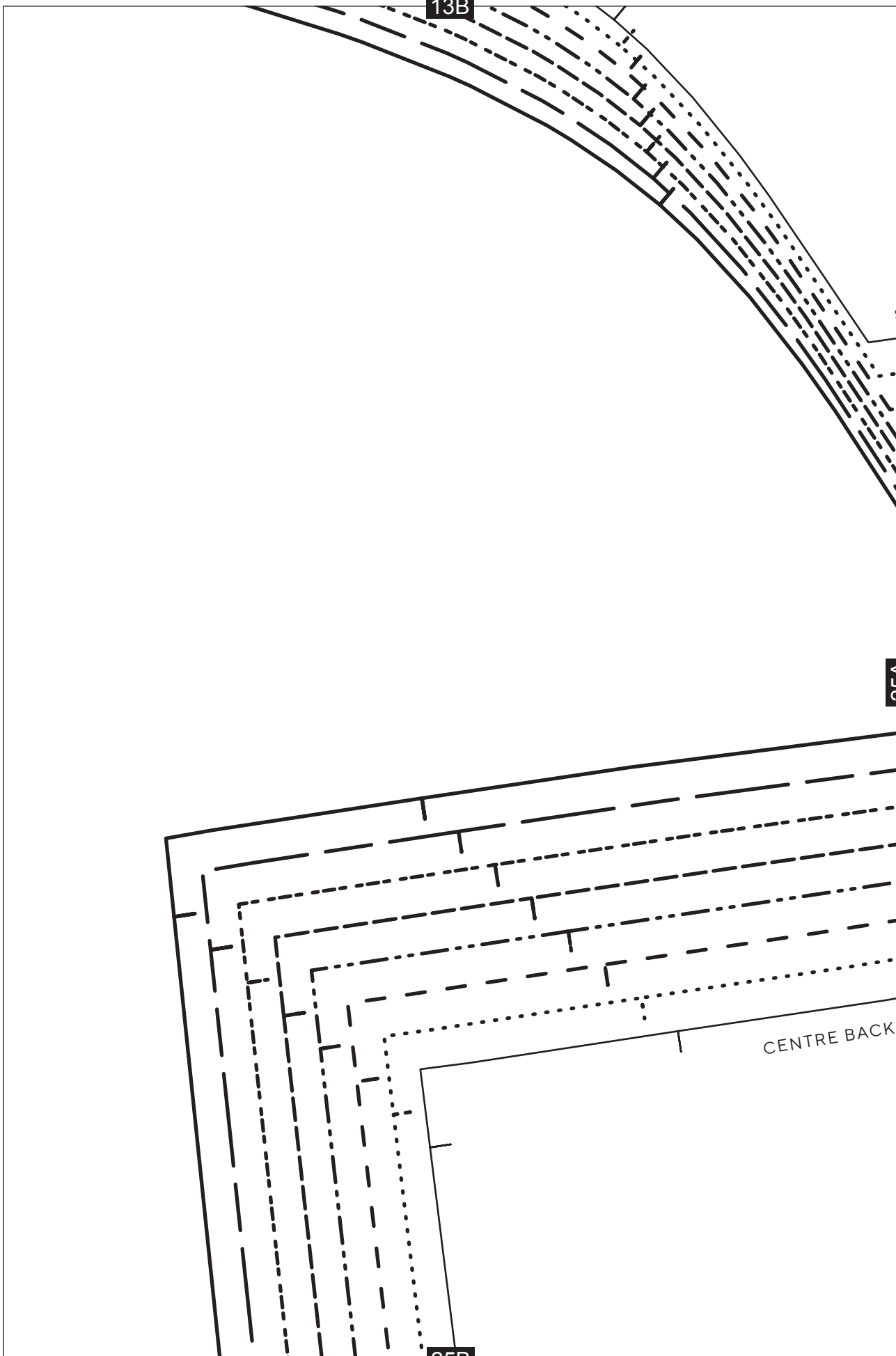


13B

25A

CENTRE BACK

25B



14B

GRAINLINE

8

10

12

14

16

18

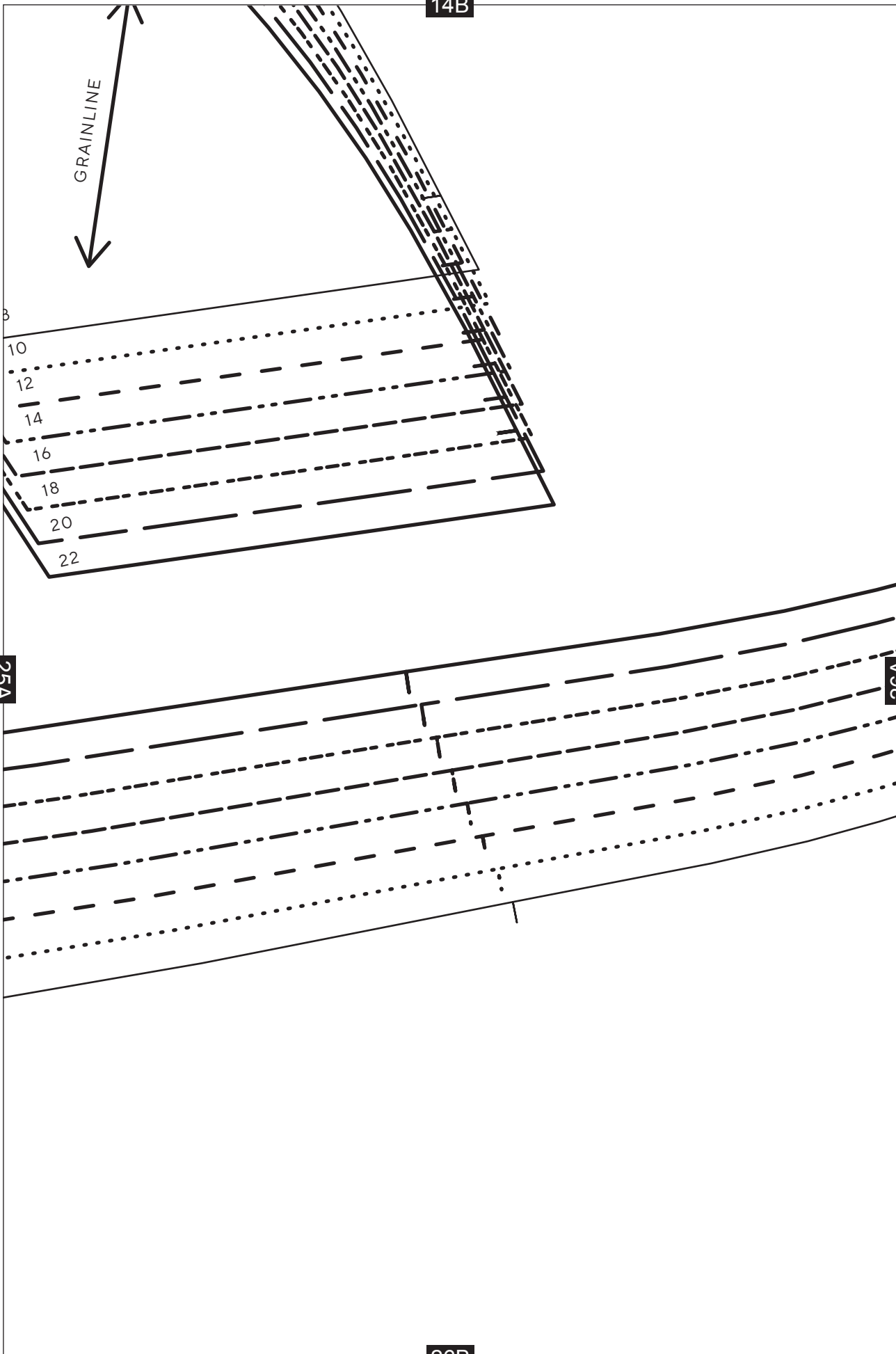
20

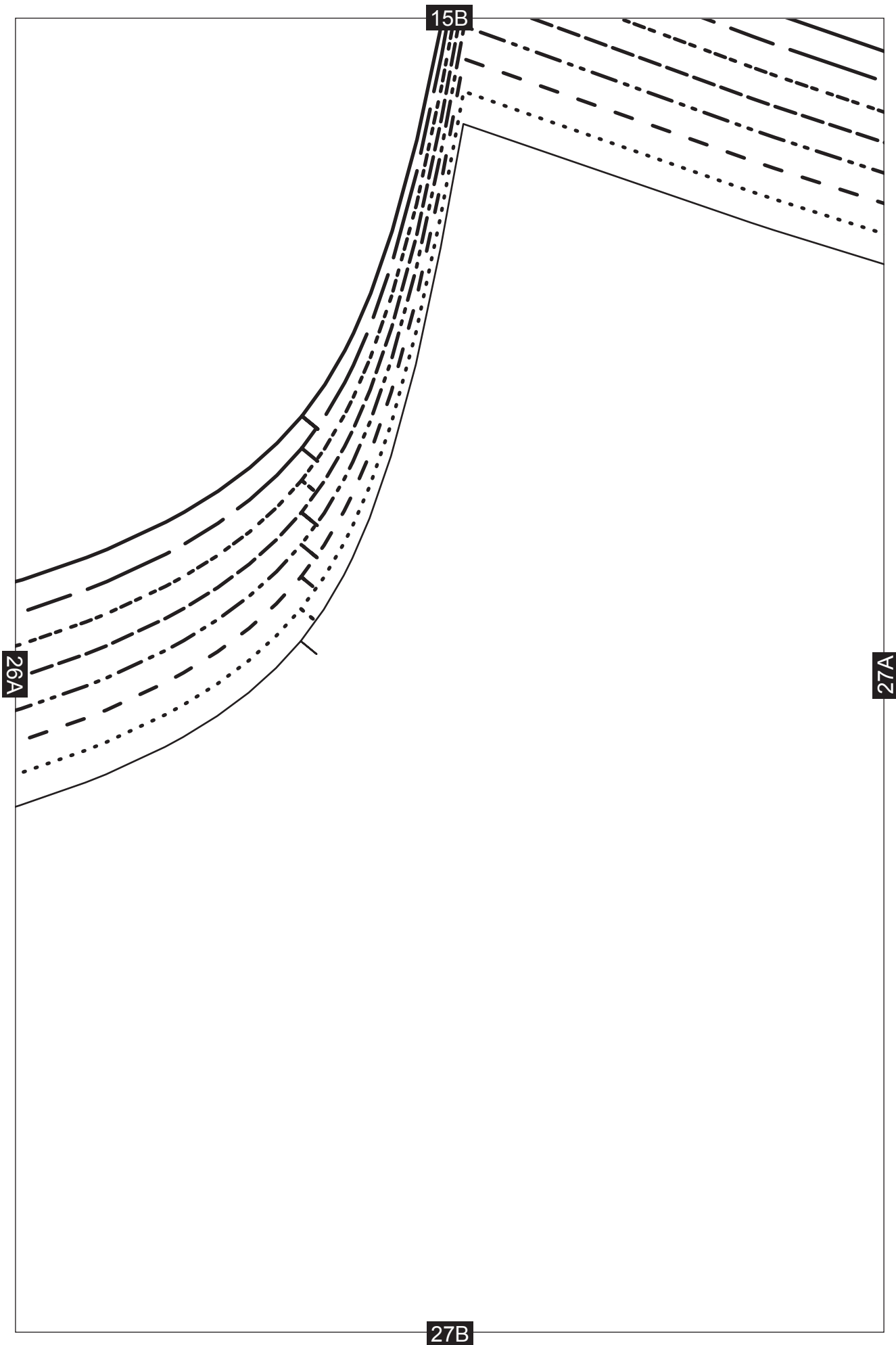
22

25A

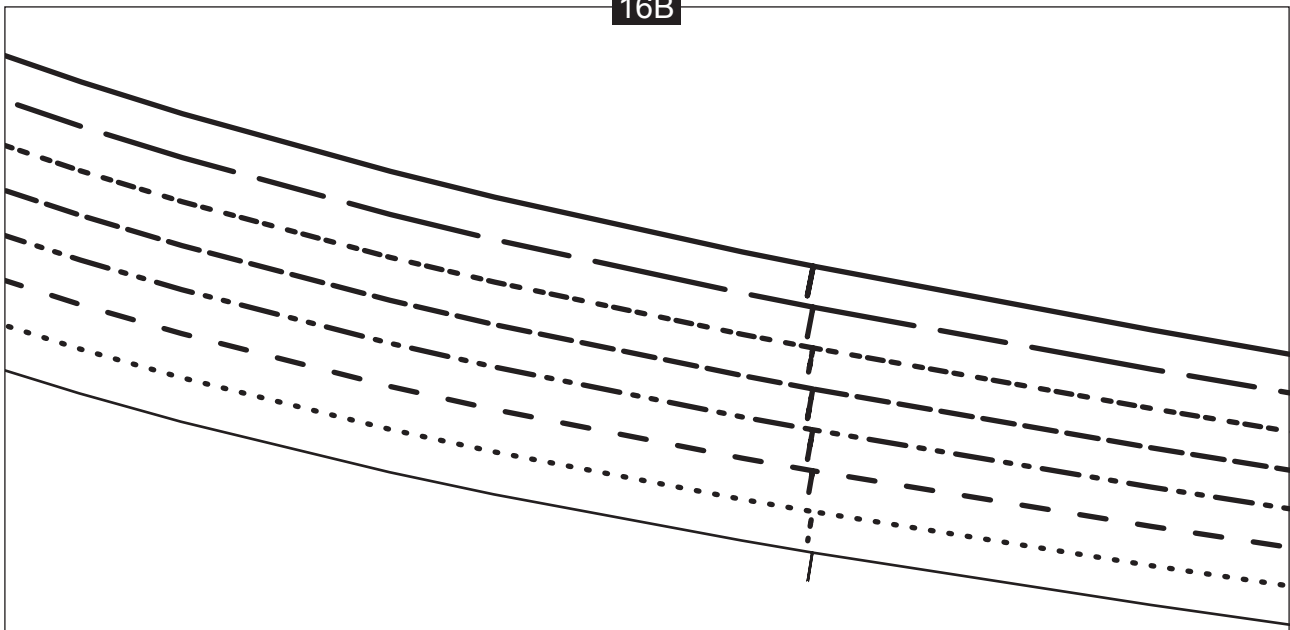
26A

26B





16B



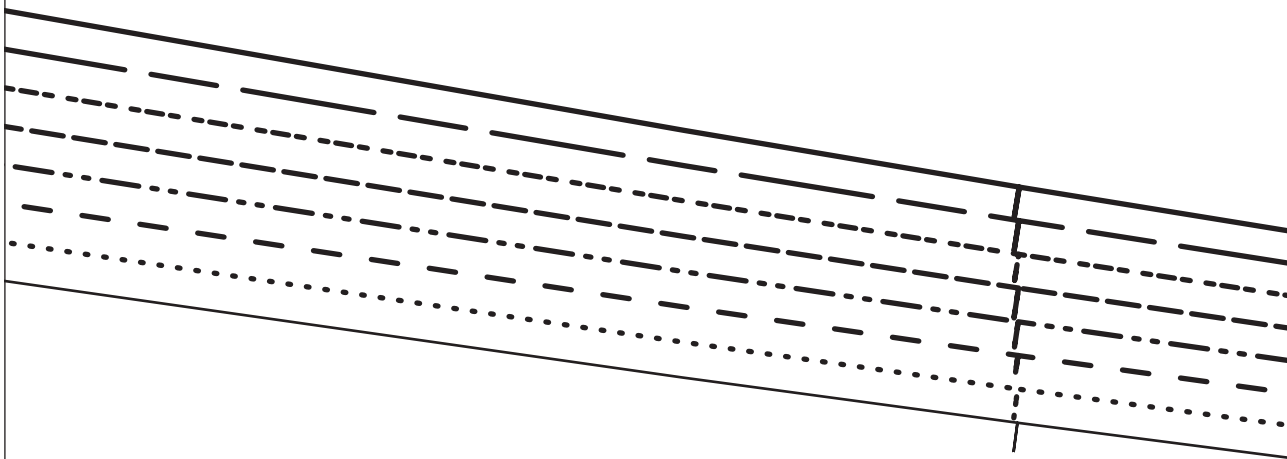
27A

28A



28B

17B



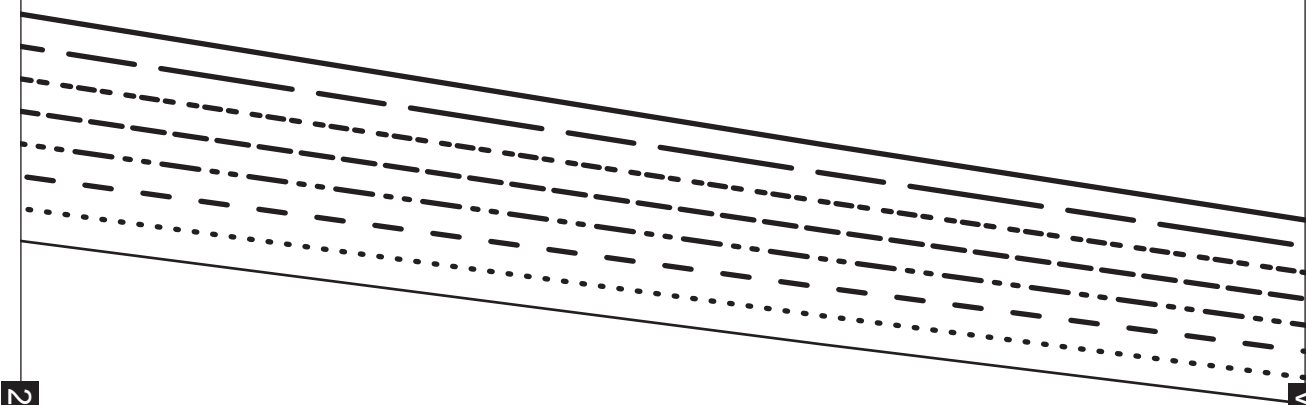
28A

29A



29B

18B



29A

30A

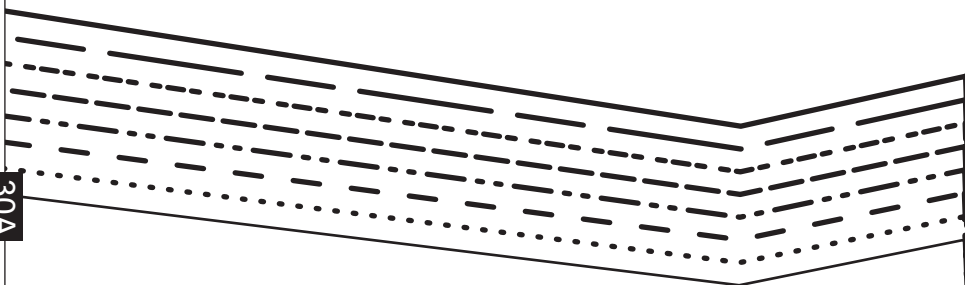
30B

19B

30A

31B

PLA 31A N.FOLD



31A

20B

GRAINLINE



32B

Cropped Top and Trousers

32A

32A

BACK BODICE - CUT 1 ON THE FOLD

21B

8

10

12

14

16

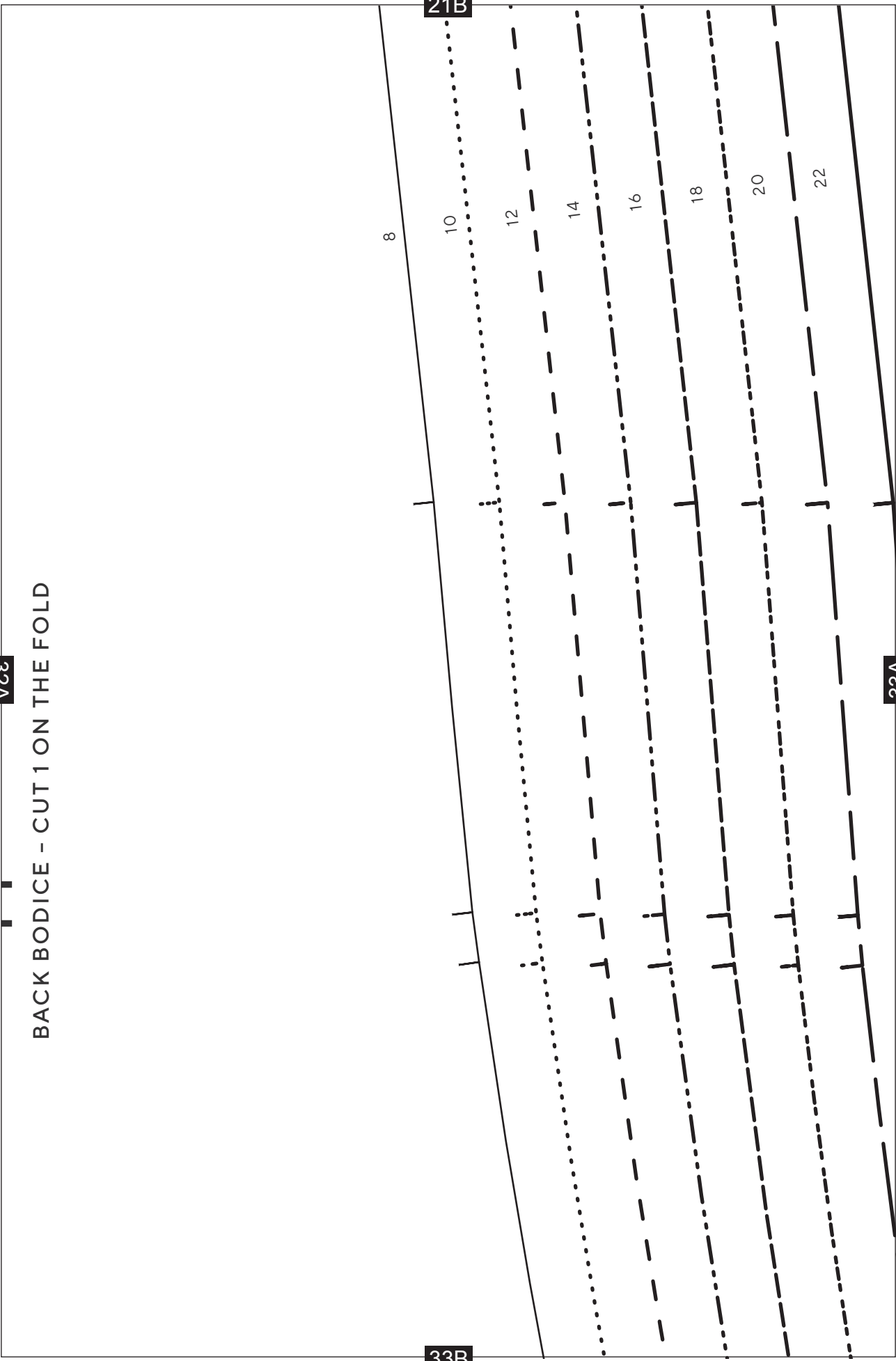
18

20

22

33B

33A



22B

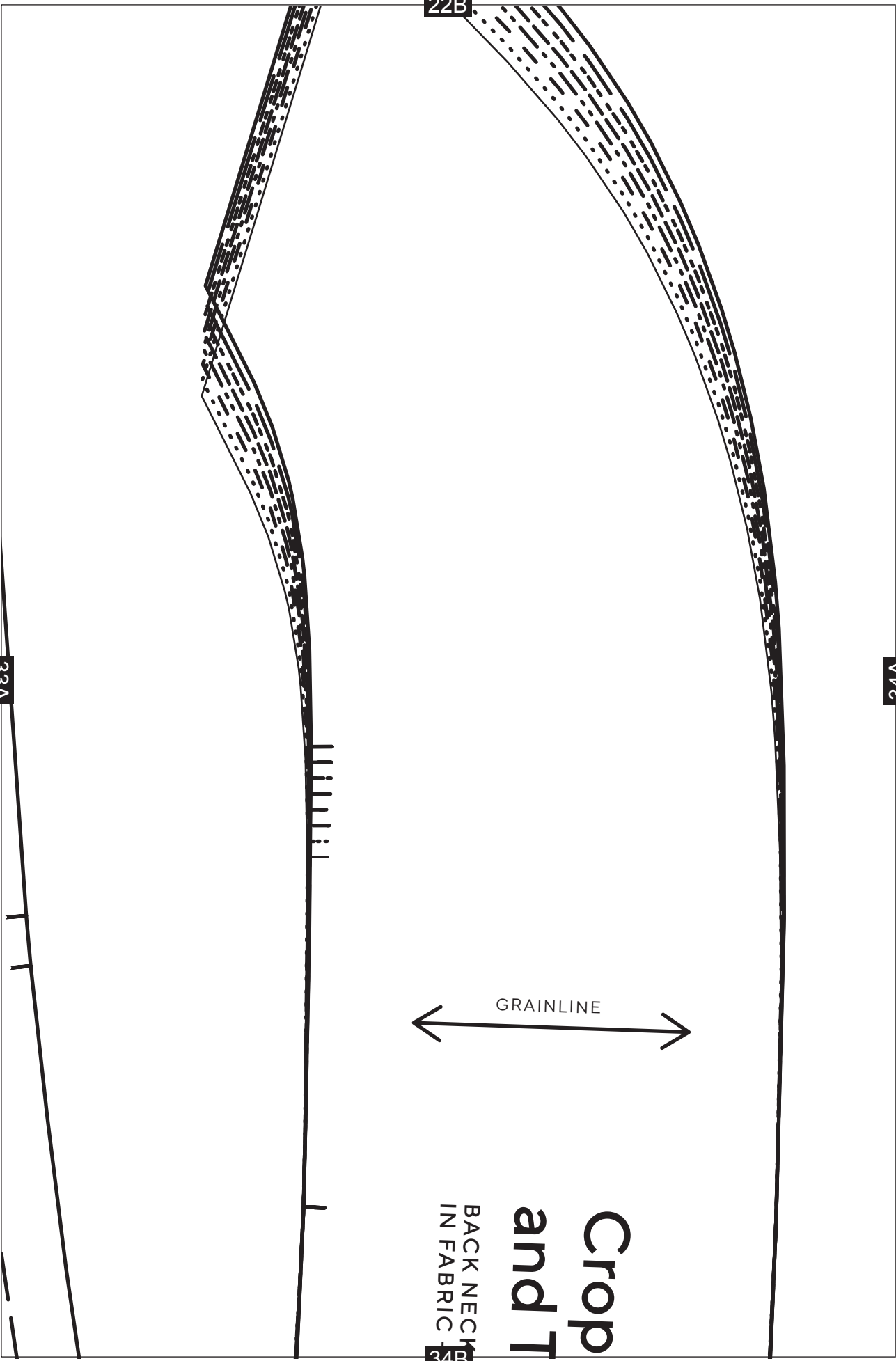
34A

33A

GRAINLINE

Crop
and T
BACK NECK
IN FABRIC

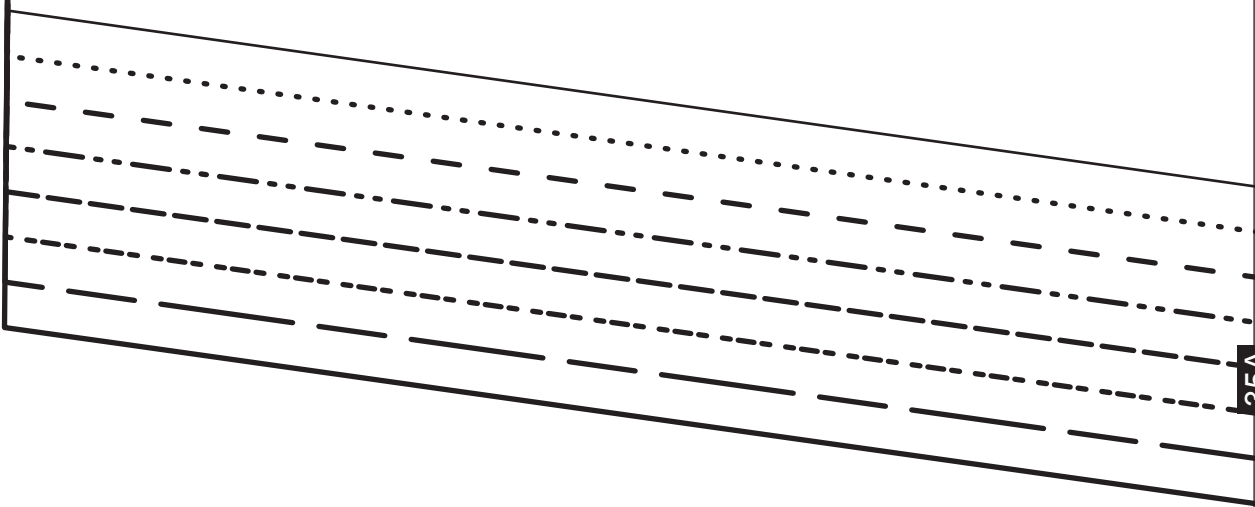
34B



23B

34A

35A



24B

FOLD

8

10

12

14

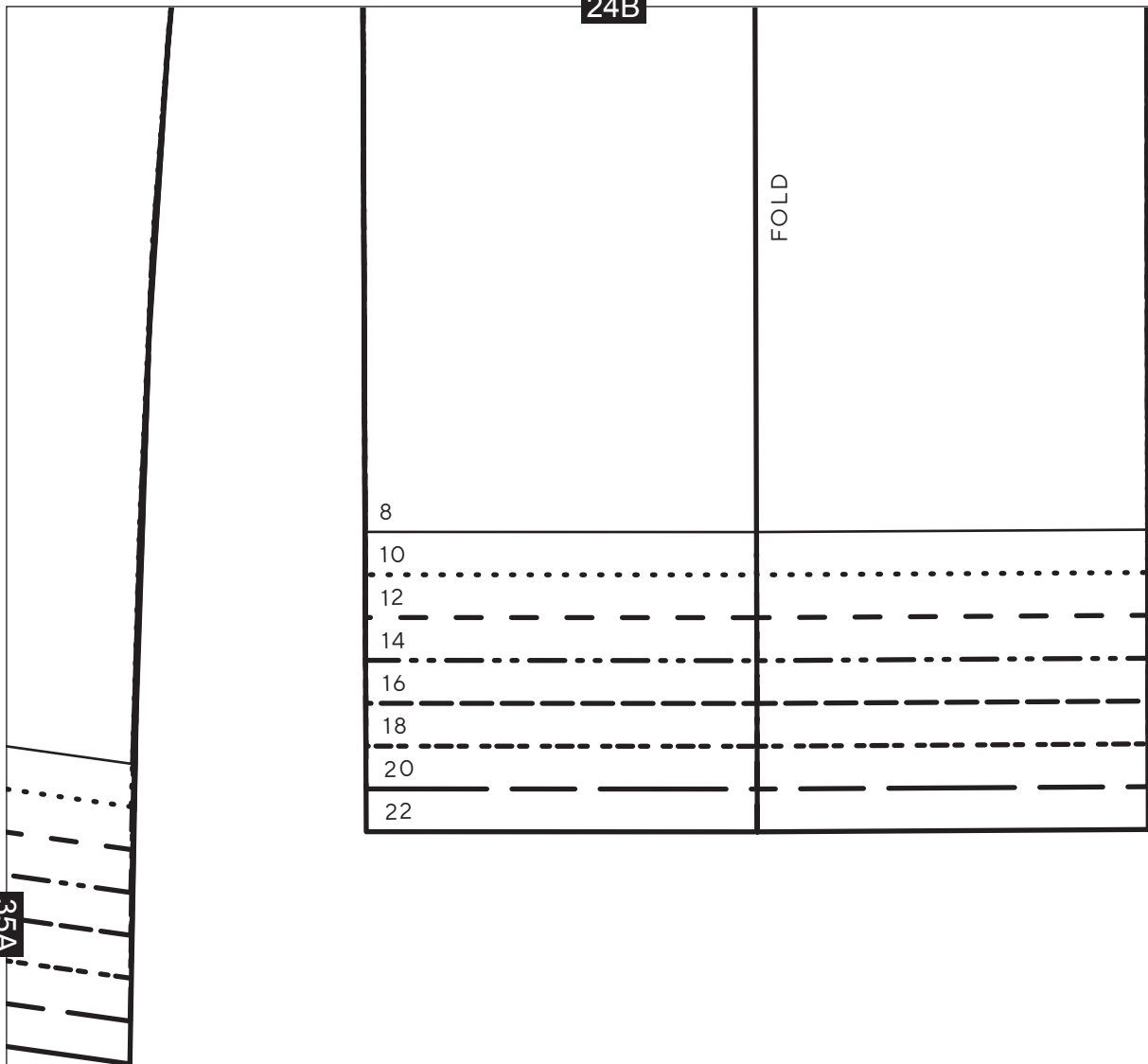
16

18

20

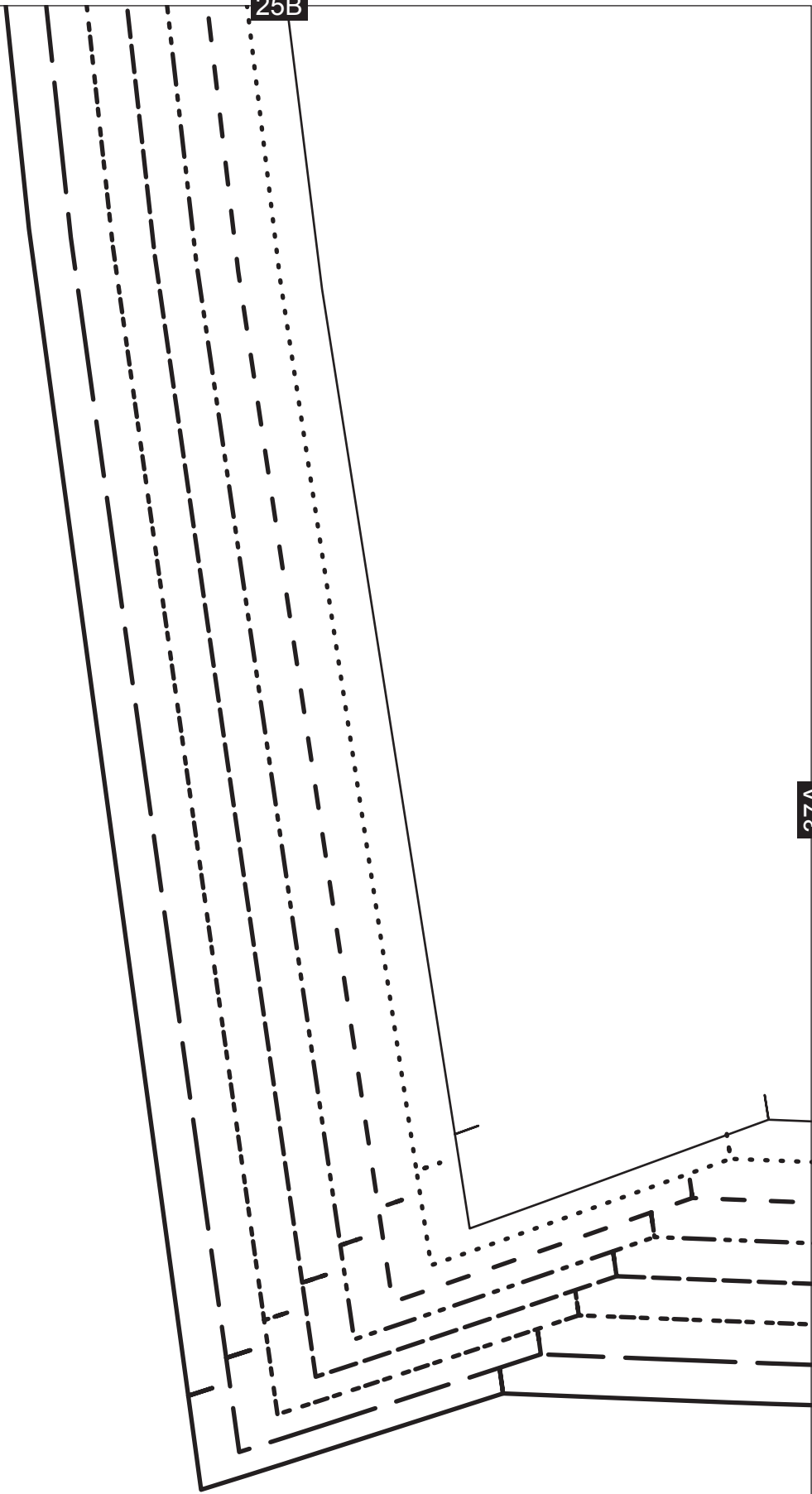
22

35A



25B

37A



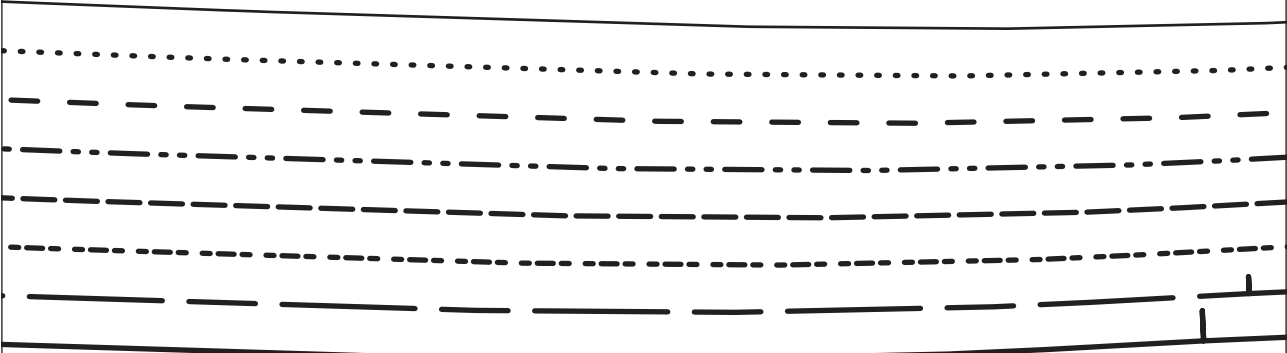
37A

26B

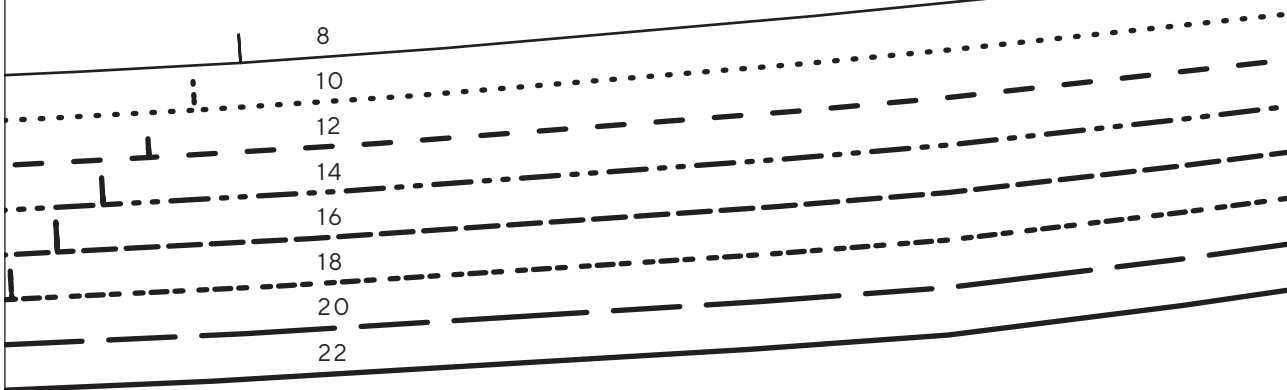
Cropped Top and Trousers

BACK TROUSER - CUT 1 PAIR

38A



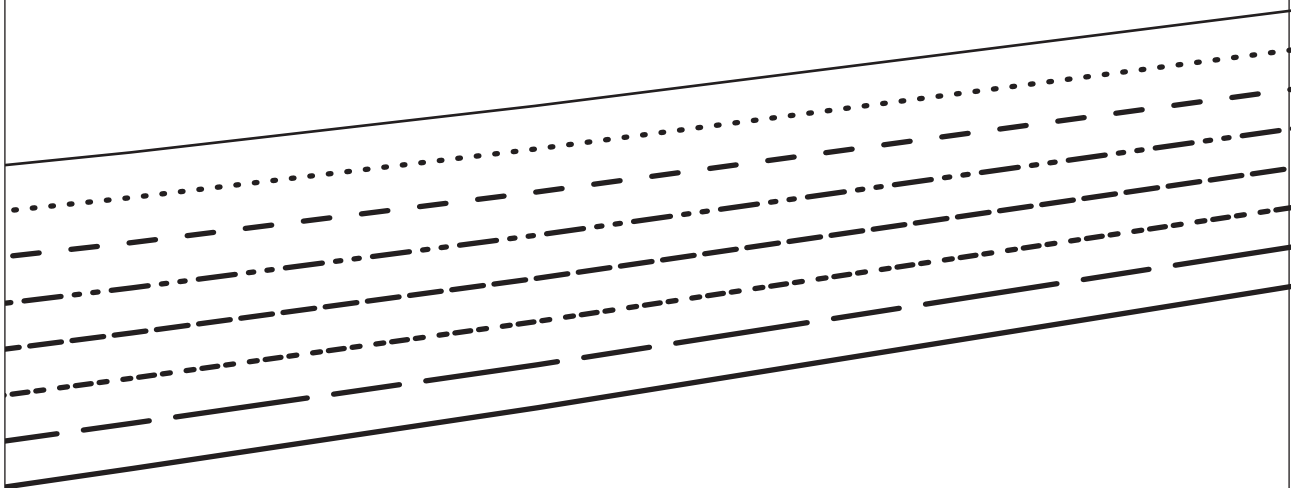
ZIP LEFT SIDE ONLY



28B

39A

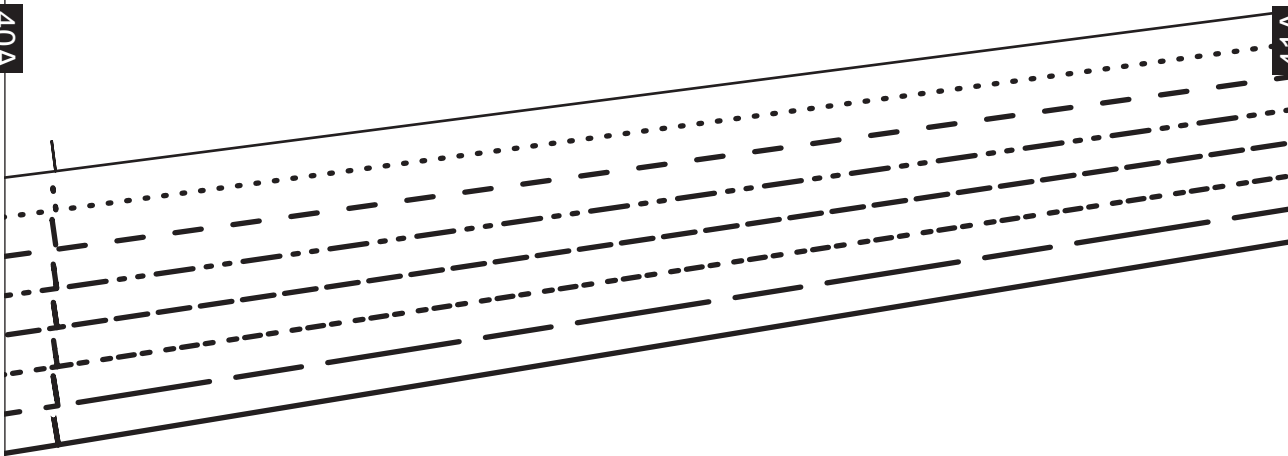
40A



29B

40A

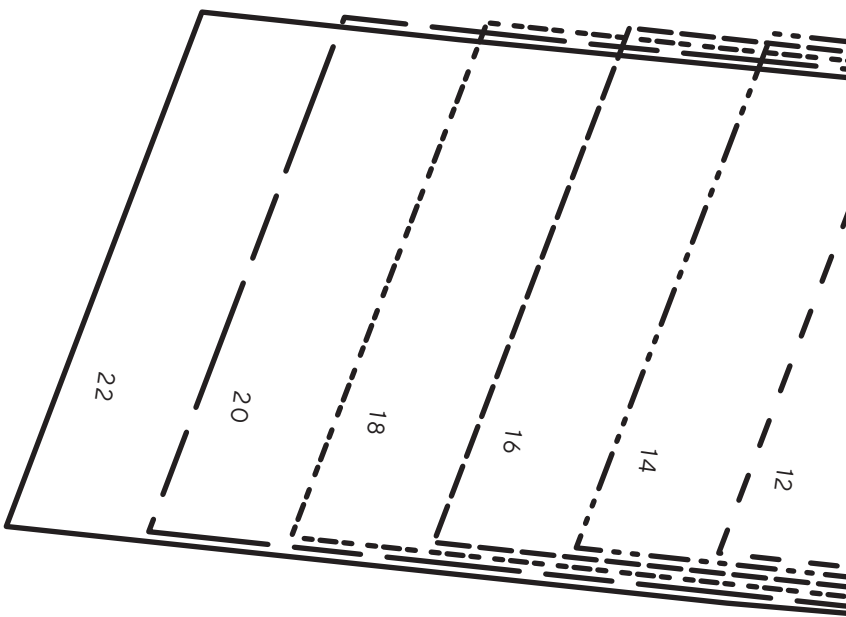
41A



30B

41A

42A



31B

CENTRE BACK

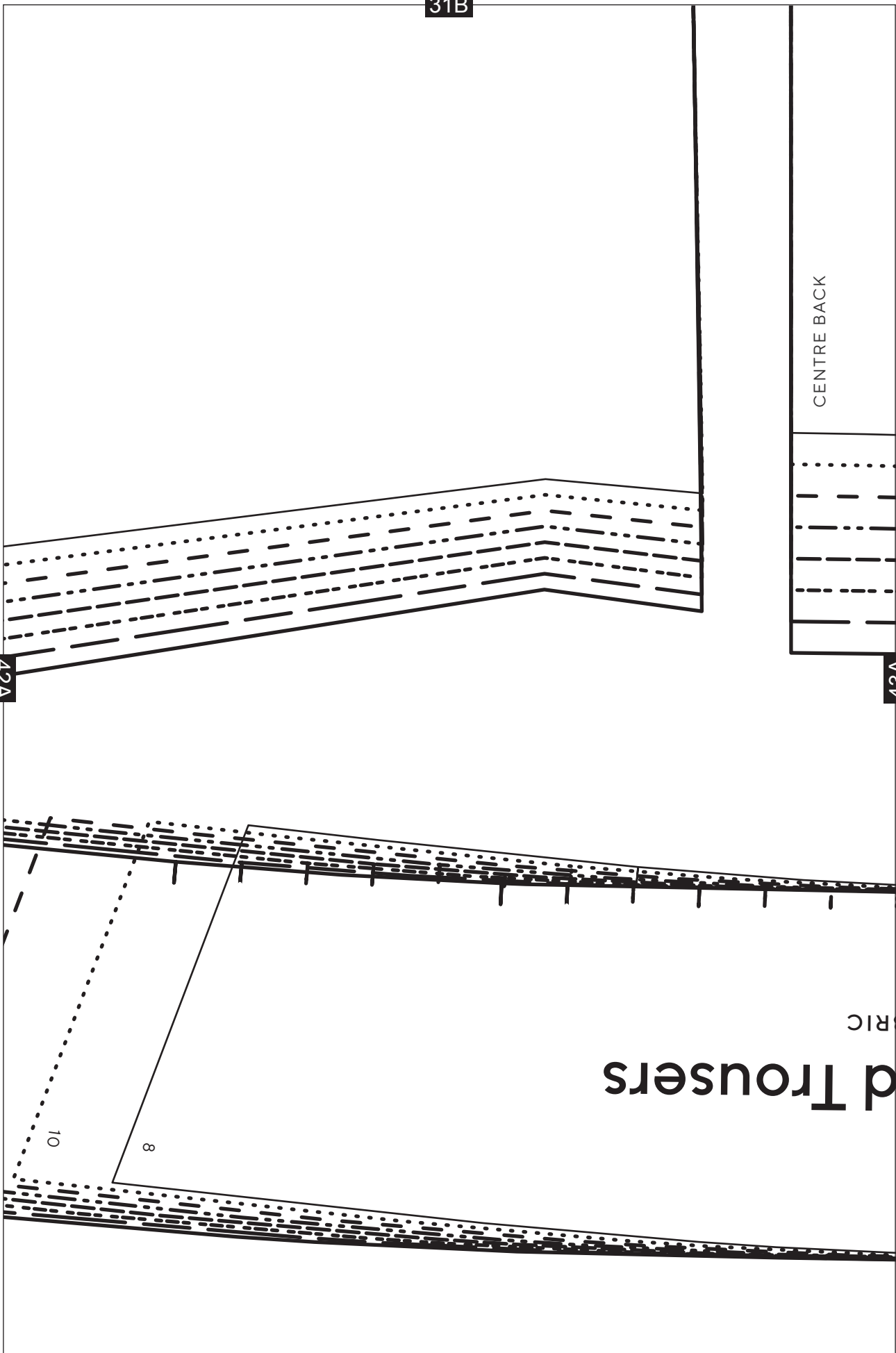
43A

42A

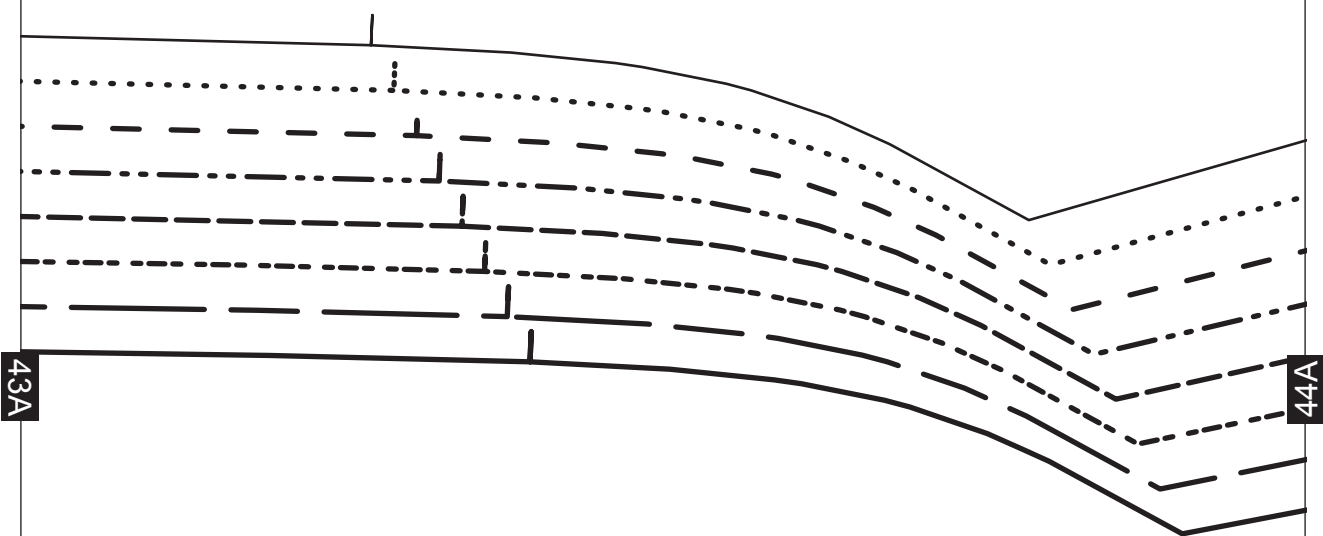
ed Trousers
ERIC

8

10



32B



43A

44A

FRONT WAIST FACING - CUT 1 IN FAB
+ 1 IN INTERFACING

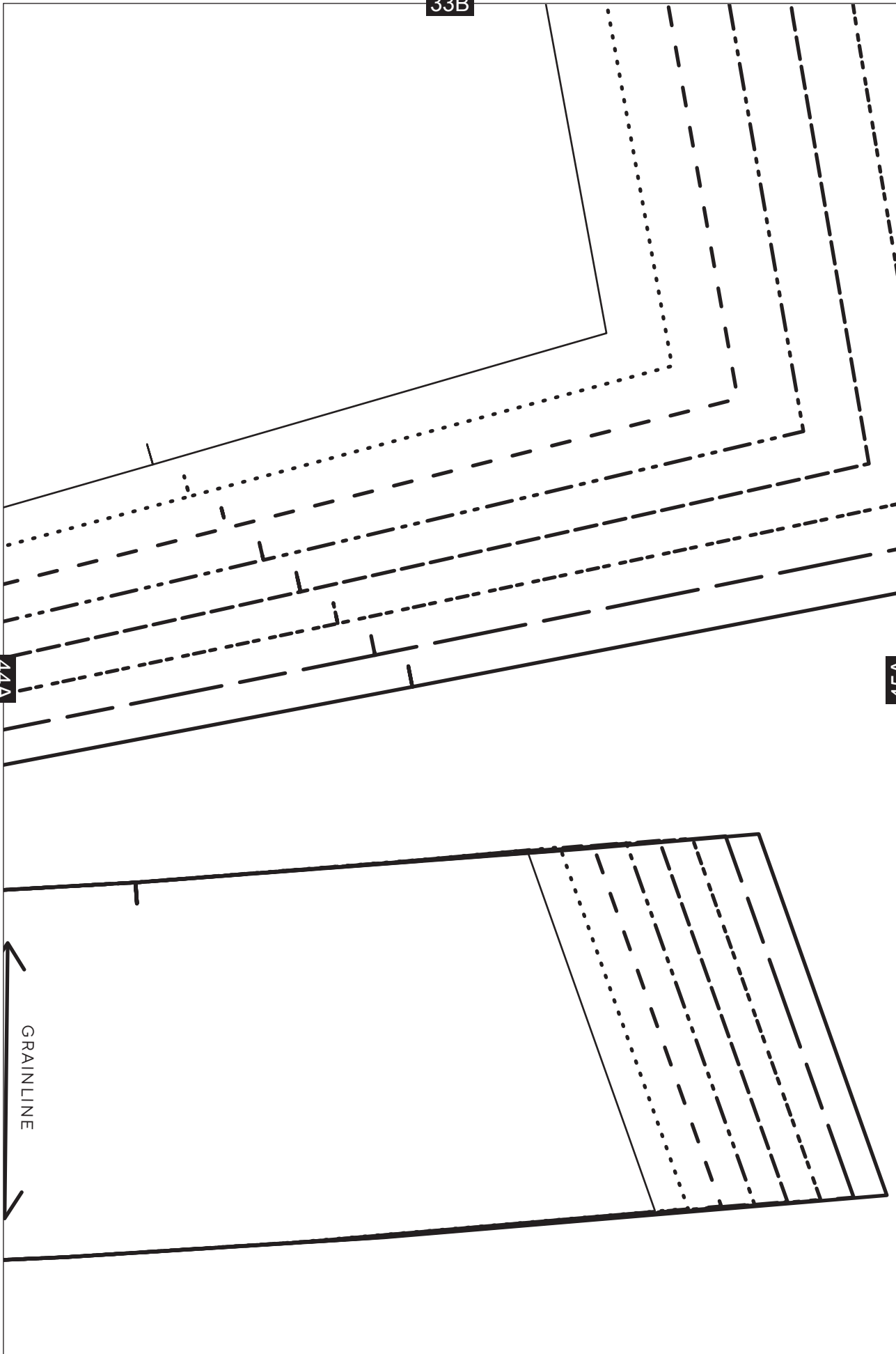
Cropped Top an

33B

44A

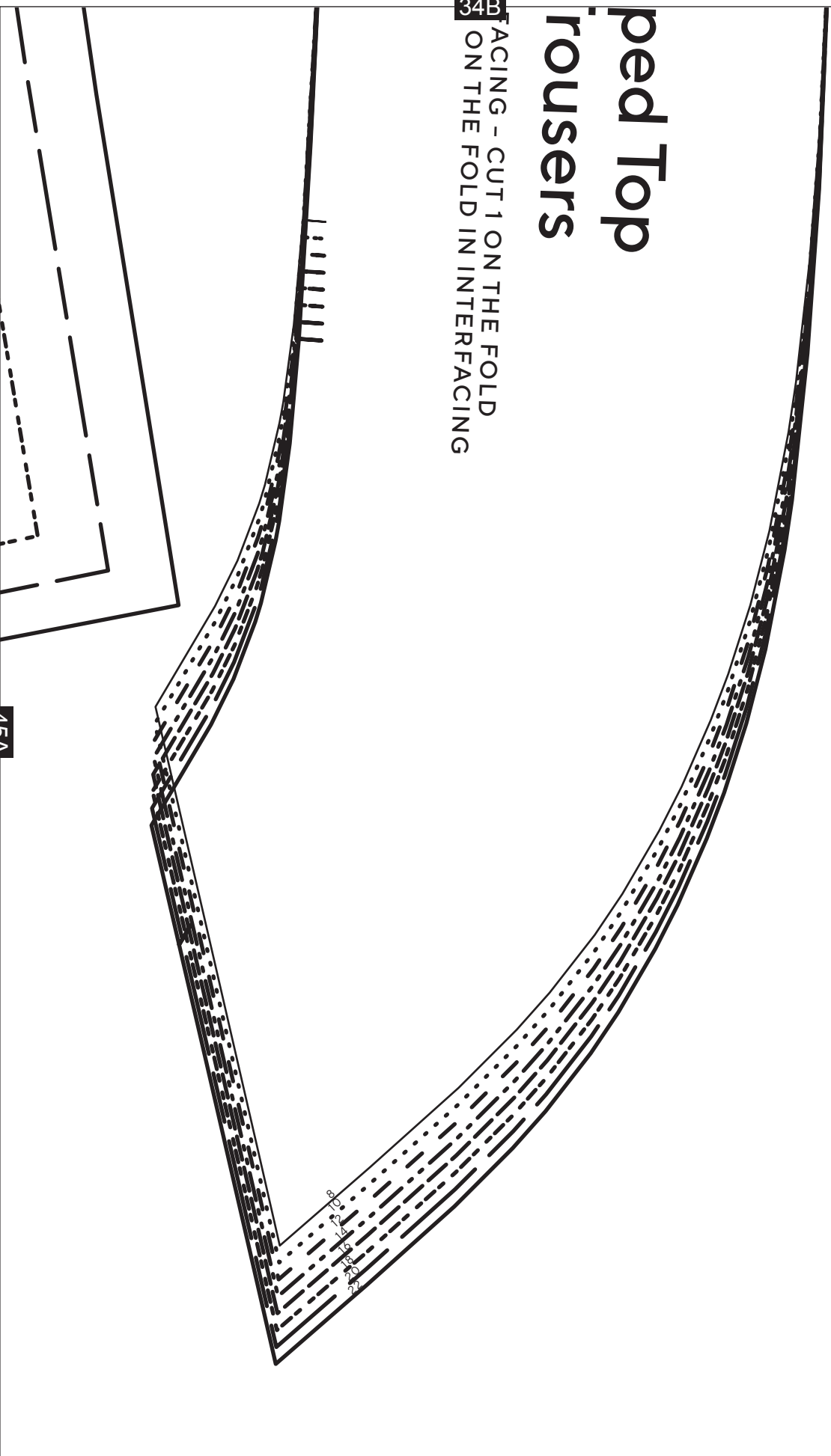
45A

GRAINLINE



ped Top rousers

34B FACING - CUT 1 ON THE FOLD
ON THE FOLD IN INTERFACING



45A